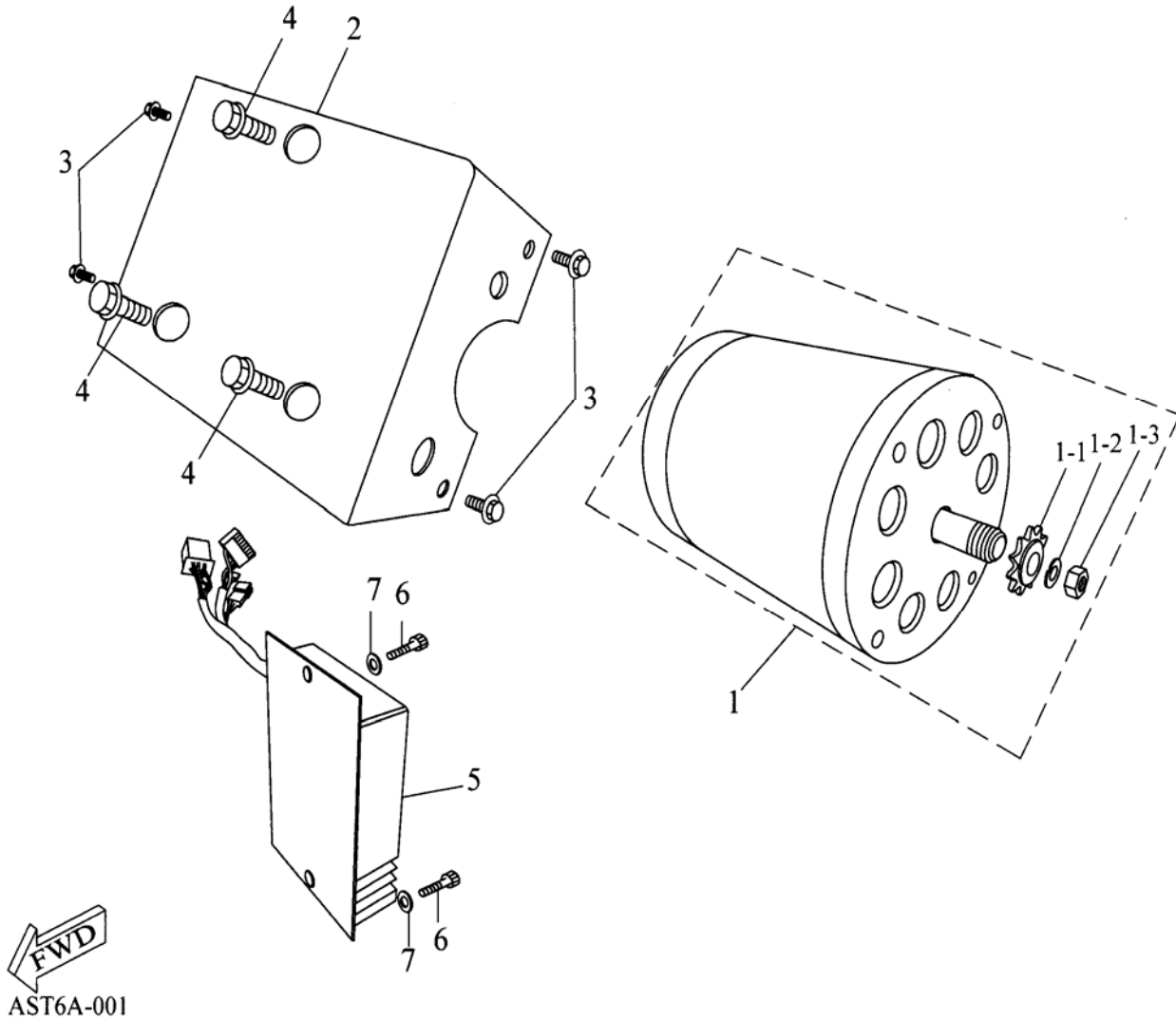
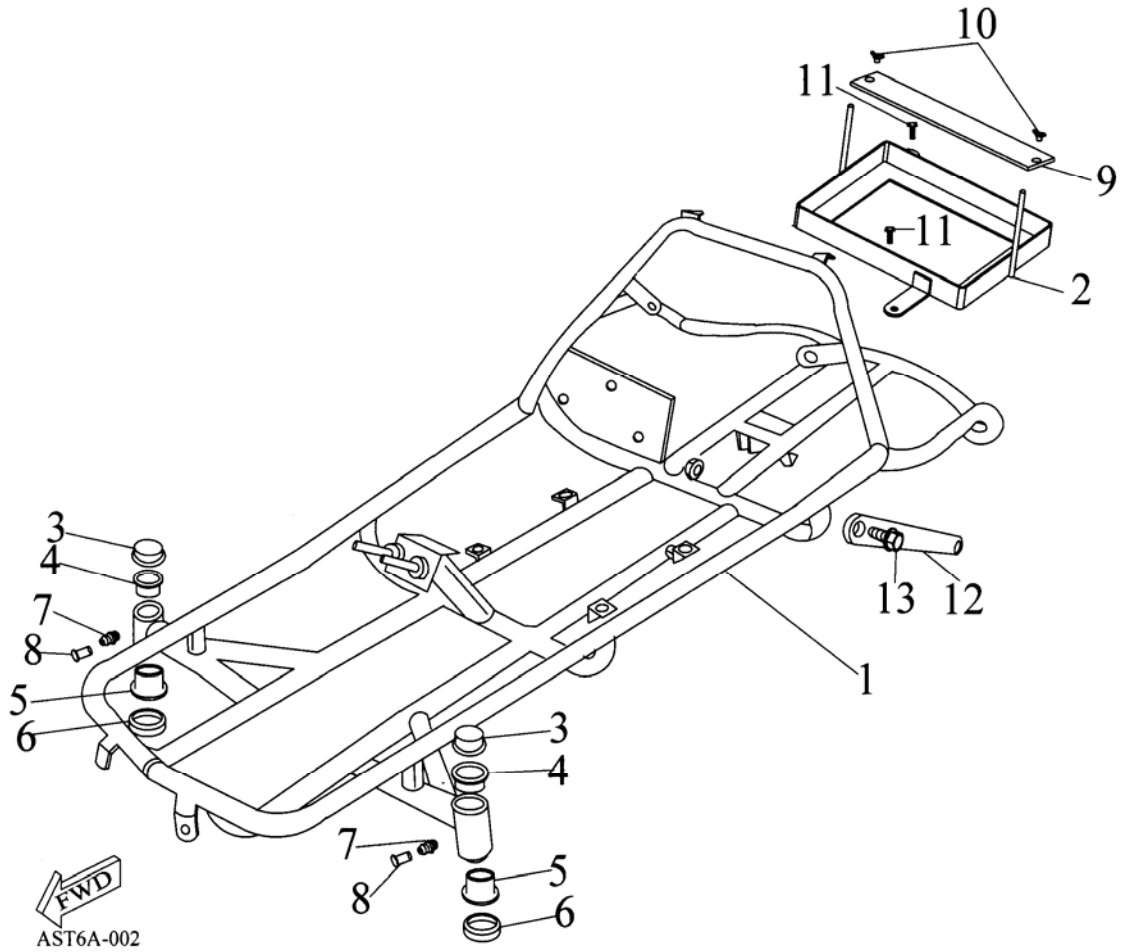


D-1 ELECTROIC MOTOR



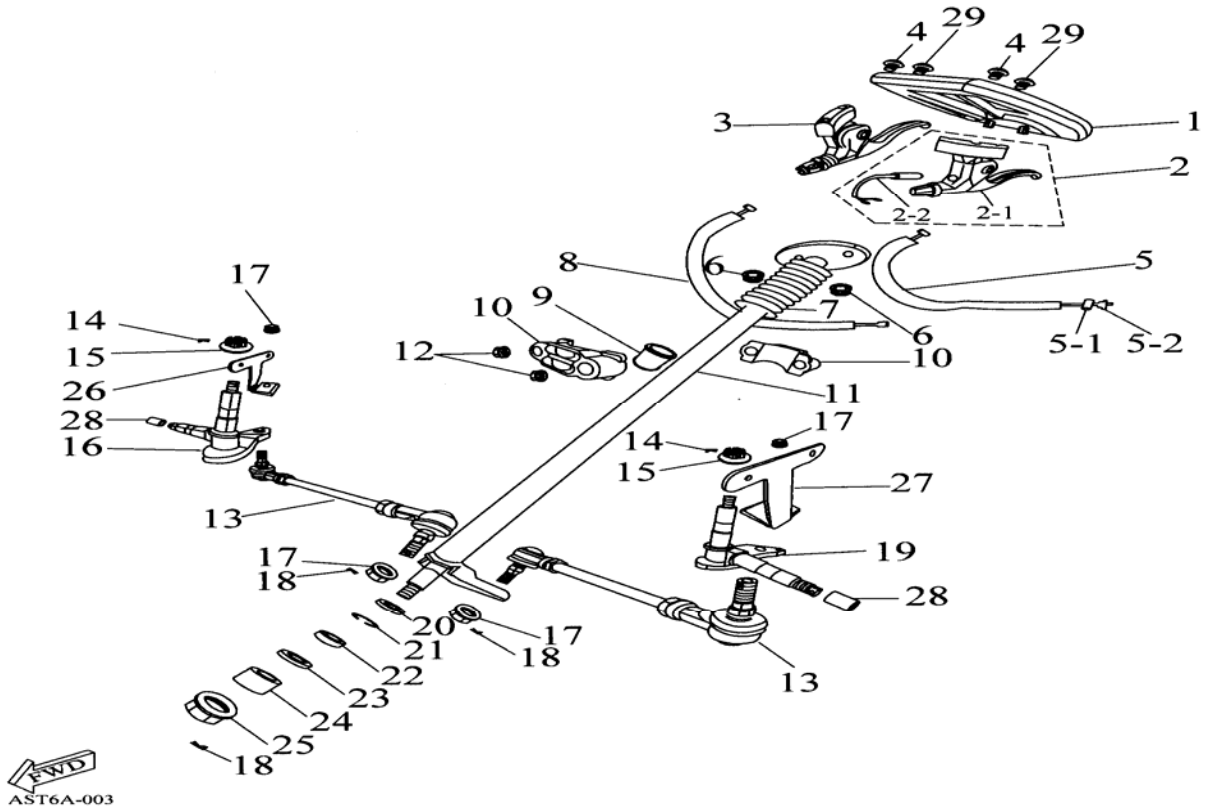
SALES MARK	P/N	DESCRIPTION	PART NO.	Q'TY	REMARK
★	D01-01	ELECTRONIC MOTOR ASS'Y	030E03-31300-00	1	
	D01-01-01	DRIVE SPOCKET 25H-11T	030E03-23801-00	1	
	D01-01-02	SPRING WASHER	94111-0812010-K	1	ψ8×ψ12×1
	D01-01-03	HEX NUT	94001-08000-12K	1	M8
★	D01-02	ELECTROIC MOTOR FIX SEAT	030E03-50320-00	1	
	D01-03	HEX BOLT WITH SPRING WASHER	92001-06016-K	4	M6×16
	D01-04	HEX BOLT WITH SPRING WASHER	92001-08020-K	3	M8×20
★	D01-05	MOTOR CONTROLLER	030E07-31310-00	1	
	D01-06	HEX SOCKET BOLT	91000-06012-K	2	M6×12
	D01-07	PLAIN WASHER	94101-0613010-C	2	ψ6×ψ13×1

D-2 FRAME BODY



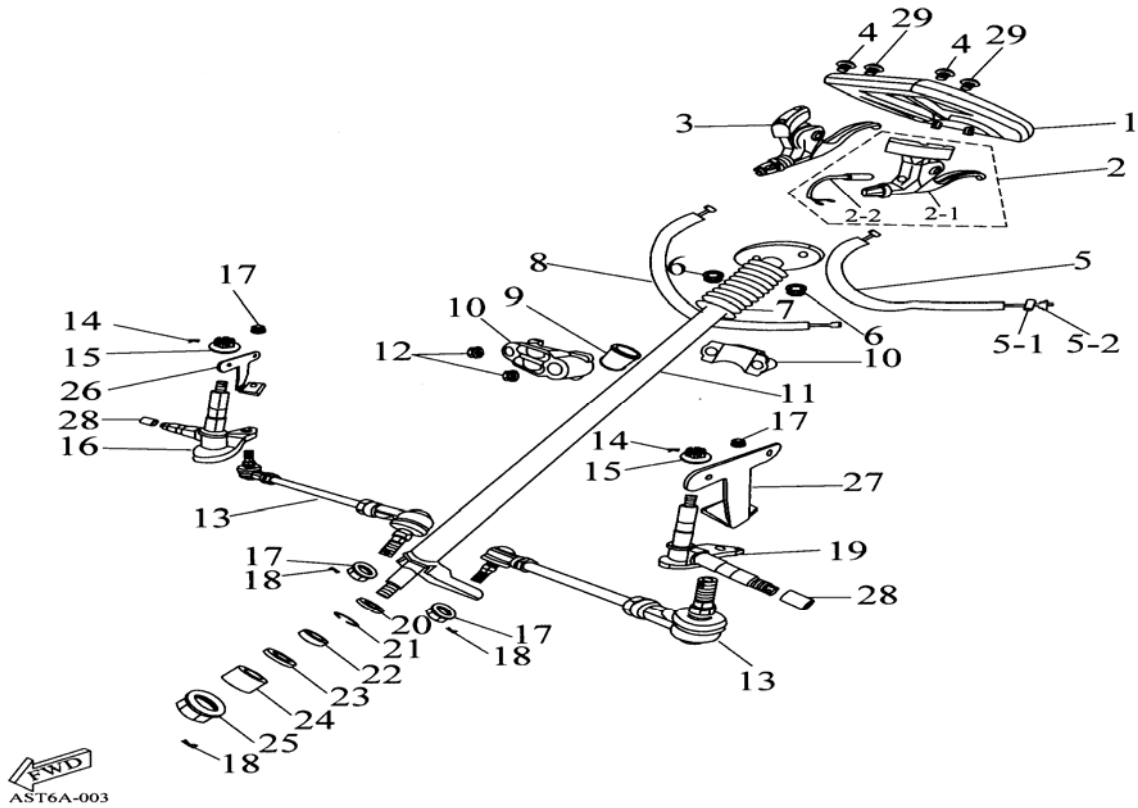
SALES MARK	P/N	DESCRIPTION	PART NO.		Q'TY	REMARK	
★	D02-01	FRAME BODY ASS'Y	030F09-50100-00		1		
★	D02-02	BATTERY BOX	030F09-31520-00		1		
★	D02-03	WATERPROOF COVER	030F01-51200-00		2		
★	D02-04	GREASE CONTAIN SEAT	030F01-52522-00		2		
★	D02-05	GREASE CONTAIN SEAT	030F01-52523-00		2		
★	D02-06	DUSTPROOF RUBBER	030F01-52424-00		2		
★	D02-07	GREASE VALVE	030F01-51300-00		2		
★	D02-08	GREASE VALVE RUBBER CAP	030F01-51301-00		2		
★	D02-09	BATTERY BOX FIX PLATE	030F09-31521-00		1		
★	D02-10	FIX NUT	030F03-31525-00		2		
	D02-11	HEX BOLT WITH WASHER	92000-06016-K		1	M6×16	
★	D02-12	REAR AXLE FIX PLATE	030F01-50119-00		1		
	D02-13	HEX WASHER FACE BOLT	96000-10020-C		1	M10×20	

D-3 STEERING



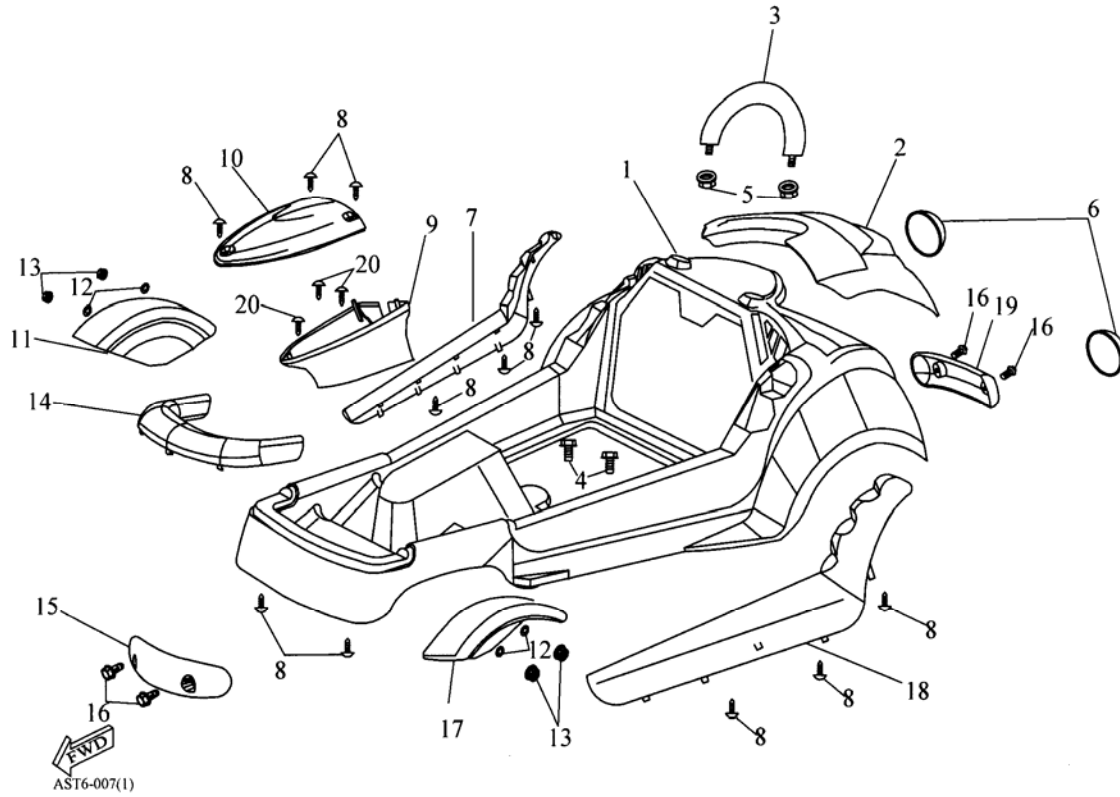
SALES MARK	P/N	DESCRIPTION	PART NO.		Q'TY	REMARK	
★	D03-01	STEERING	030F03-51130-00		1		
★	D03-02	LEFT LEVER ASS'Y(REDF)	030F03-53171-00		1		
★	D03-02-01	LEFT LEVER	030F01-53171-01		1		
★	D03-02-02	TOUCH SWITCH	030F03-34913-00		1		
★	D03-03	RIGHT LEVER ASS'Y(GREEN)	030F01-53172-01		1		
	D03-04	PAN PHILLIPS BOLT	93100-05015-K		2	M5×15	
★	D03-05	REAR BRAKE CABLE	030F01-43450-00		1		
★	D03-05-01	REAR BRAKE FIXTUBE	030F01-43456-00		1		
★	D03-05-02	BRAKE ADJUST NUT	030F01-43457-00		1		
	D03-06	NYLON INSERT LOCK NUT	90350-08000-C		2	M8	
★	D03-07	PROTECT RUBBER	030F01-51131-00		1		
★	D03-08	THROTTLE CABLE	030F03-17910-00		1		
★	D03-09	STEERING SHAFT PU SLEEVE	030F01-51220-00		1		
★	D03-10	STEERING SHAFT HOLD	030F01-53500-00		2		
★	D03-11	STEERING SHAFT	030F01-51107-00		1		
	D03-12	HEX FLANGE NUT	94050-08000-C		2	M8	
★	D03-13	STEERING TIE-ROD ASS'Y	030F01-53410-01		2		

D-3 STEERING



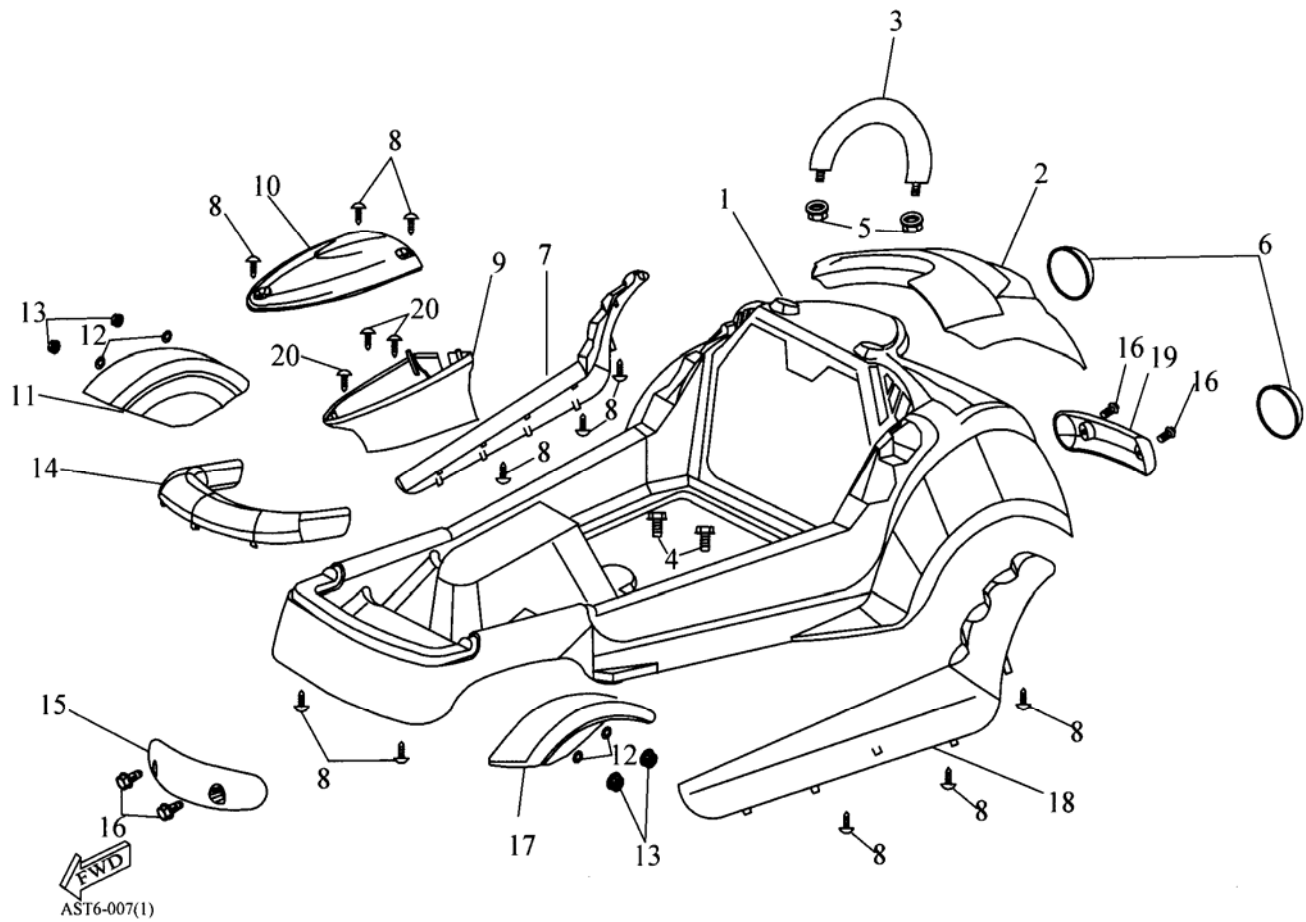
SALES MARK	P/N	DESCRIPTION	PART NO.		Q'TY	REMARK	
★	D03-14	COTTER PIN	94201-16190		2		
	D03-15	INSERT LOCK NUT	90352-10000-C		2	M10	
★	D03-16	KNUCKLE (R)	030F01-51320-00		1		
	D03-17	NYLON INSERT LOCK NUT	90350-10000-C		4	M10	
★	D03-18	COTTER PIN	94201-24190		3		
★	D03-19	KNUCKLE (L)	030F01-51310-00		1		
★	D03-20	OIL SEAL	96500-18327		1		
★	D03-21	CIRCLIP	94512-3200R		1		
★	D03-22	RADIAL BALL BEARING	96100-600ZZ		1		
★	D03-23	OIL SEAL	96500-22357		1		
★	D03-24	COLLAR	97100-15217015		1		
★	D03-25	LOCK NUT	90350-14000-UC		1	M14	
★	D03-26	R. STAY	030F01-51105-00		1		
★	D03-27	L. STAY	030F01-51106-00		1		
★	D03-28	COLLAR	97100-1723016		2		
	D03-29	PAN PHILLIPS BOLT	93100-05020-K		2	M5×20	

D-4 FENDER



SALES MARK	P/N	DESCRIPTION	PART NO.		Q'TY	REMARK	
★	D04-01B	FENDER(BLACK)	030F03-61100-00-B01		1		
★	D04-02R	ENGINE COVER(RED)	030F01-61120-00-R13		1		
★	D04-02Y	ENGINE COVER(YELLOW)	030F01-61120-00-Y01		1		
★	D04-03	HOLDER	030F01-81210-00		1		
	D04-04	HEX BOLT WITH WASHER	92000-06016-K		2	M6×16	
	D04-05	NYLON INSERT LOCK NUT	90350-08000-C		2	M8	
★	D04-06	LENS	030F01-33702-00		2		
★	D04-07R	RIGHT SIDE COVER(RED)	030F01-83503-00-R13		1		
★	D04-07Y	RIGHT SIDE COVER(YELLOW)	030F01-83503-00-Y01		1		
	D04-08	TAPPING SCREW	93903-05012-K		11	M5×12	
★	D04-09R	HANDLE BAR DOWN COVER(RED)	030F03-53200-00-R13		1		
★	D04-09Y	HANDLE BAR DOWN COVER(YELLOW)	030F03-53200-00-Y01		1		
★	D04-10R	HANDLE BAR UP COVER(RED)	030F01-64211-00-R13		1		
★	D04-10Y	HANDLE BAR UP COVER(YELLOW)	030F01-64211-00-Y01		1		
★	D04-11R	FRONT FENDER-R(RED)	030F01-61150-00-R13		1		

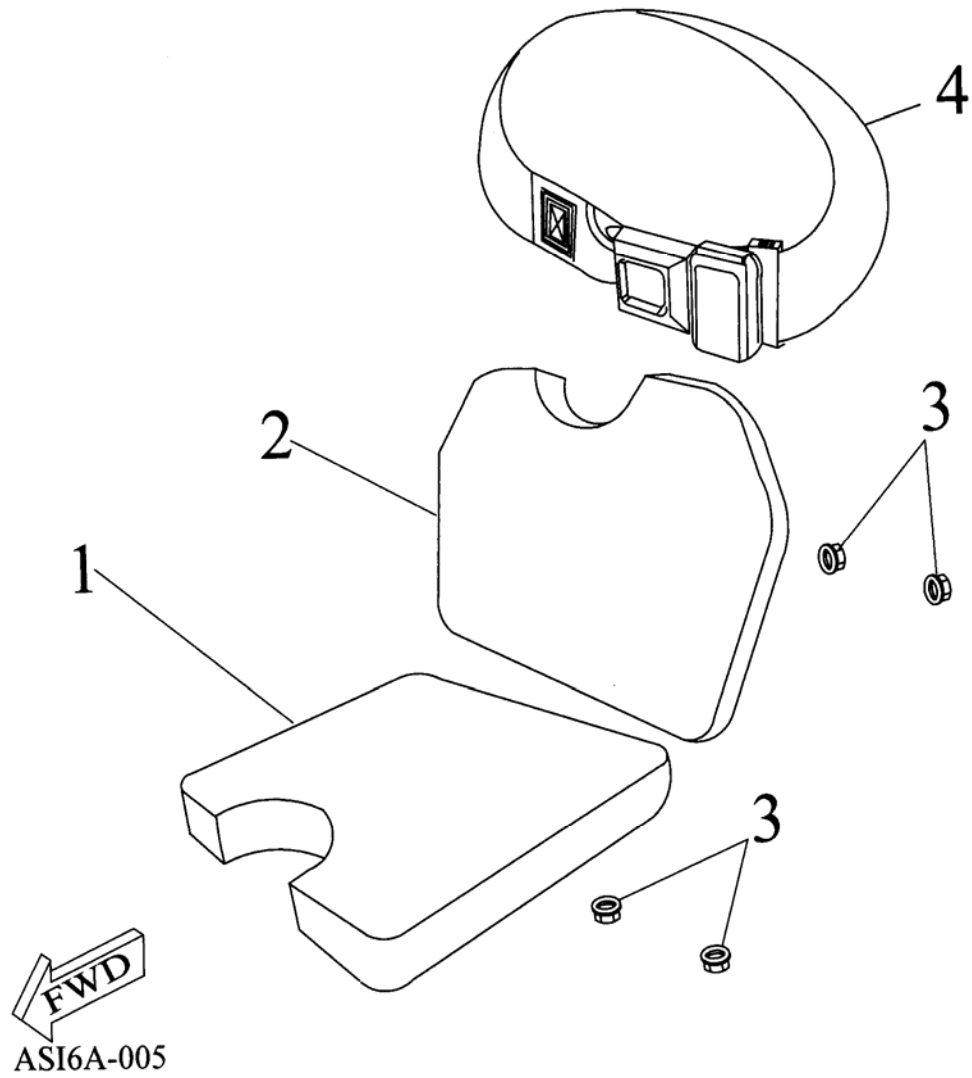
D-4 FENDER



SALES MARK	P/N	DESCRIPTION	PART NO.		Q'TY	REMARK	
★	D04-11Y	FRONT FENDER-R(YELLOW)	030F01-61150-00-Y01		1		
	D04-12	PLAIN WASHER	94101-0514010-K		4	ψ5×ψ14×1	
	D04-13	NYLON INSERT LOCK NUT	90350-05000-K		4	M5	
★	D04-14R	FENDER UP COVER(RED)	030F01-61130-00-R13		1		
★	D04-14Y	FENDER UP COVER(YELLOW)	030F01-61130-00-Y01		1		
★	D04-15	FRONT FEND BAR	030F01-50450-00		1		
	D04-16	HEX BOLT WITH WASHER	92000-06025-K		4	M6×25	
★	D04-17R	FRONT FENDER-L(RED)	030F01-61160-00-R13		1		
★	D04-17Y	FRONT FENDER-L(YELLOW)	030F01-61160-00-Y01		1		
★	D04-18R	LEFT SIDE COVER(RED)	030F01-83603-00-R13		1		
★	D04-18Y	LEFT SIDE COVER(YELLOW)	030F01-83603-00-Y01		1		
★	D04-19	REAR FEND BAR	030F01-40471-00		1		

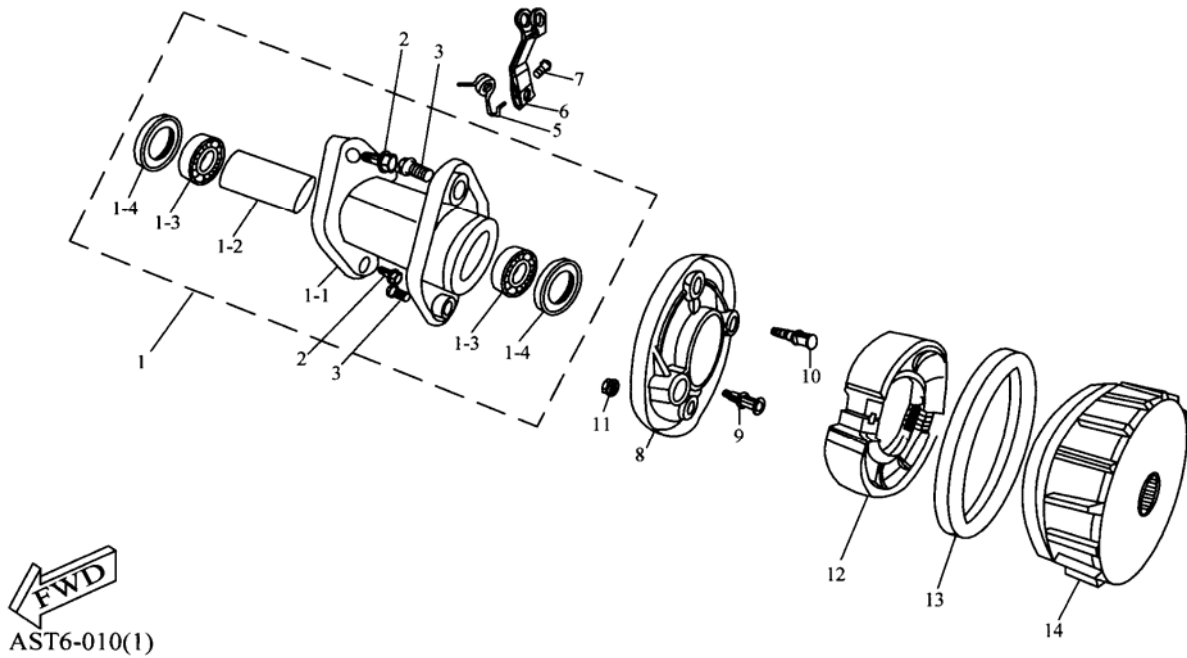
	D04-20	TAPPING SCREW	93903-05016-K		3	M5×16	
--	--------	---------------	---------------	--	---	-------	--

D-5 SEAT



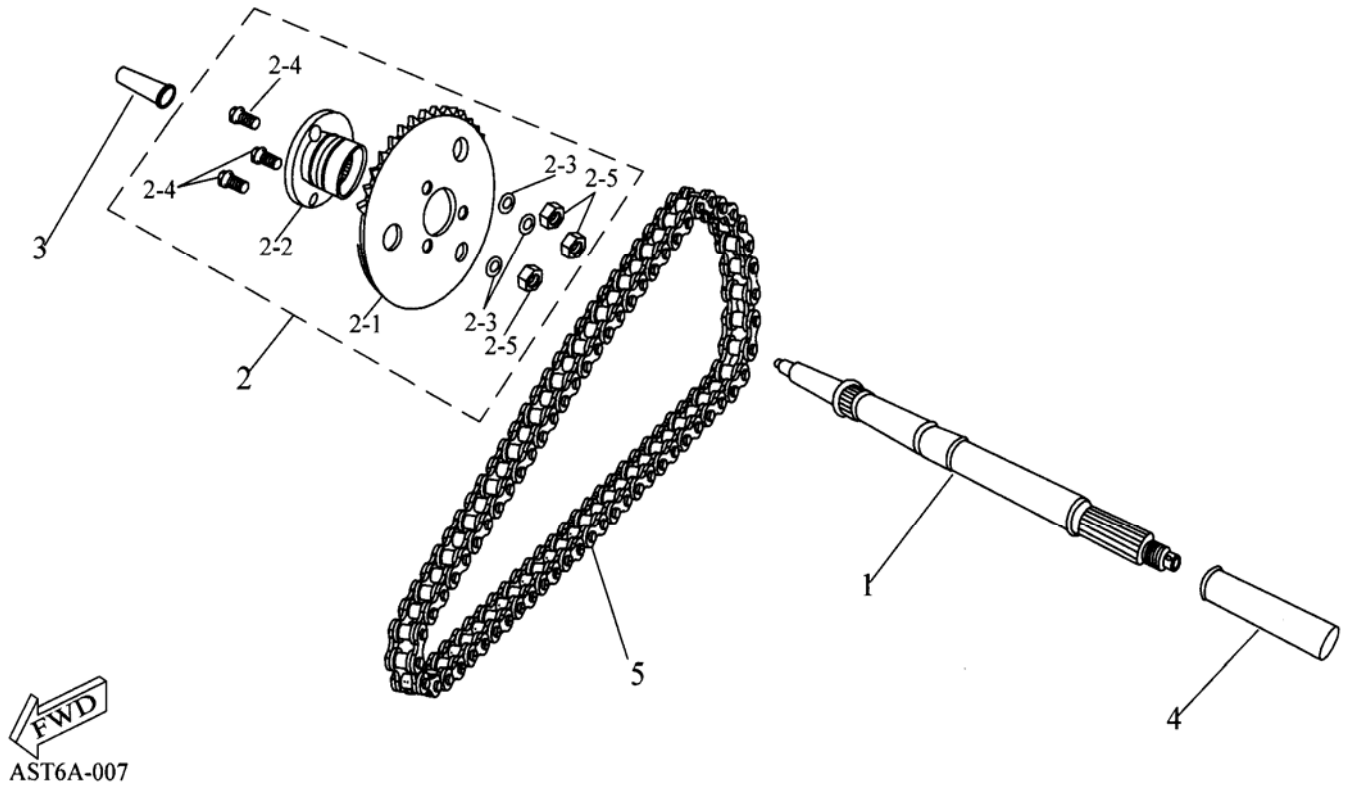
SALES MARK	P/N	DESCRIPTION	PART NO.		Q'TY	REMARK	
★	D05-01R	SEAT-RED	030F01-77200-00-R0		1		
★	D05-01Y	SEAT-BLACK	030F01-77200-00-Y0		1		
★	D05-02R	UP SEAT -RED	030F01-77300-00-R0		1		
★	D05-02Y	UP SEAT -BLACK	030F01-77300-00-Y0		1		
	D05-03	HEX WASHER FACE NUT	94050-06000-K		4	M6	
★	D05-04	SAFETY BELT	030F01-77250-00		1		

D-6 REAR AXLE FIX SEAT



SALES MARK	P/N	DESCRIPTION	PART NO.		Q'TY	REMARK	
★	D06-01	REAR AXLE FIX SEAT ASS'Y	030F01-42803-00		1		
★	D06-01-01	REAR AXLE FIX SEAT	030F01-42805-00		1		
★	D06-01-02	COLLAR	030F01-42810-00		1		
★	D06-01-03	RADIAL BALL BEARING	96100-6006ZZ		2		
★	D06-01-04	OIL SEAL	96500-355511		2		
	D06-02	HEX WASHER FACE BOLT	96000-12028-CL		2	M12×28	
	D06-03	HEX WASHER FACE BOLT	96000-12038-C		2	M12×38	
	D06-04	CANEL	-		-	-	
★	D06-05	REAR BRAKE ARM SPRING	030F01-43420-00		1		
★	D06-06	REAR BRAKE ARM	030F01-43410-00		1		
	D06-07	HEX WASHER FACE BOLT	96000-06028-10C		1	M6×28	
★	D06-08	REAR BRAKE PLATE	030F01-43510-00		1		
★	D06-09	REAR BRAKE FIX SHAFT	030F01-45110-00		1		
★	D06-10	REAR BRAKE CAM SHAFT	030F01-43141-00		1		
	D06-11	NYLON INSERT LOCK NUT	90350-08000-C		1	M8	
★	D06-12	REAR BRAKE SHOE COMP.	030F01-43120-00		1		
★	D06-13	PROTECTIVE RUBBER	030F01-43521-00		1		
★	D06-14	REAR BRAKE DRUM	030F01-43520-00		1		

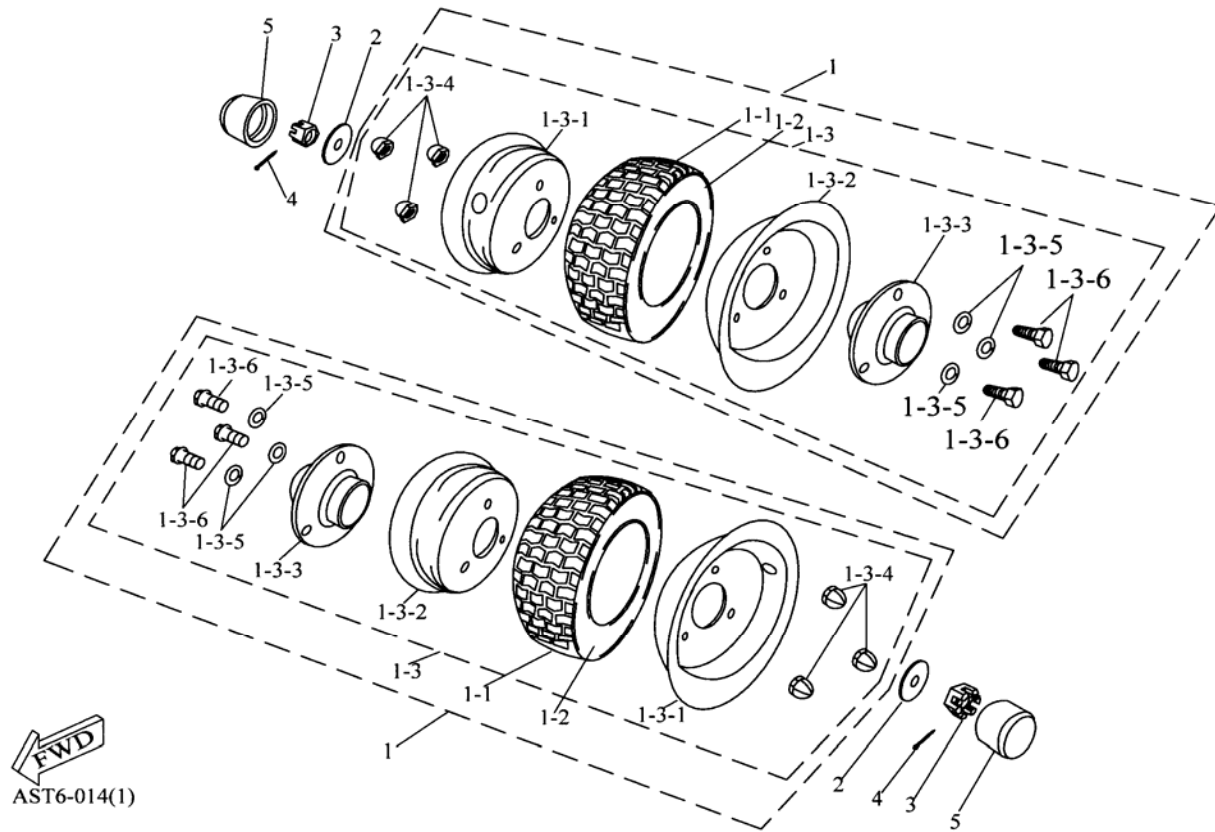
D-7 REAR AXLE



SALES MARK	P/N	DESCRIPTION	PART NO.		Q'TY	REMARK	
★	D07-01	REAR AXLE	030F01-97000-00		1		
★	D07-02	FINAL DRIVE SPROCKET ASS'Y(25H~80T)	030F03-41200-00		1		
	D07-02-01	FINAL DRIVE SPROCKET(25H~80T)	030F03-41201-00		1		
	D07-02-02	FINAL DRIVE SPROCKET HOLDER	030F01-41210-00		1		
	D07-02-03	SPRING WASHER	94111S-08000-C		3	ψ8	
	D07-02-04	HEX WASHER FACE BOLT	96000-08020-K		3	M8×20	
	D07-02-05	HEX NUT	94001-08000-K		3	M8	
★	D07-03	SPACER TUBE (R)	030F01-97100-00		1		
★	D07-04	SPACER TUBE (L)	030F01-97110-00		1		
★	D07-05	CHAIN	030F03-40530-00		1		

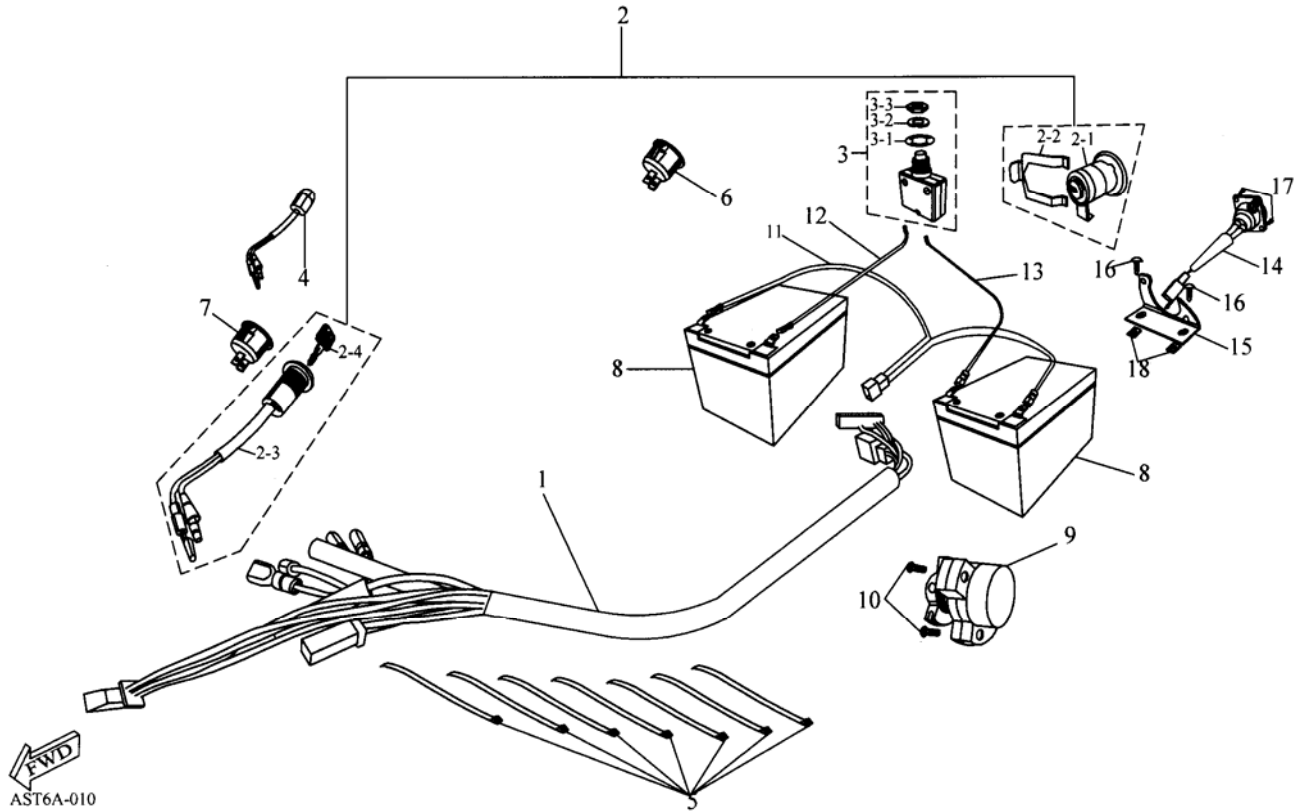
★	D08-05	RUBBER CAP	030F01-42730-00		2		
---	--------	------------	-----------------	--	---	--	--

D-9 REAR WHEEL



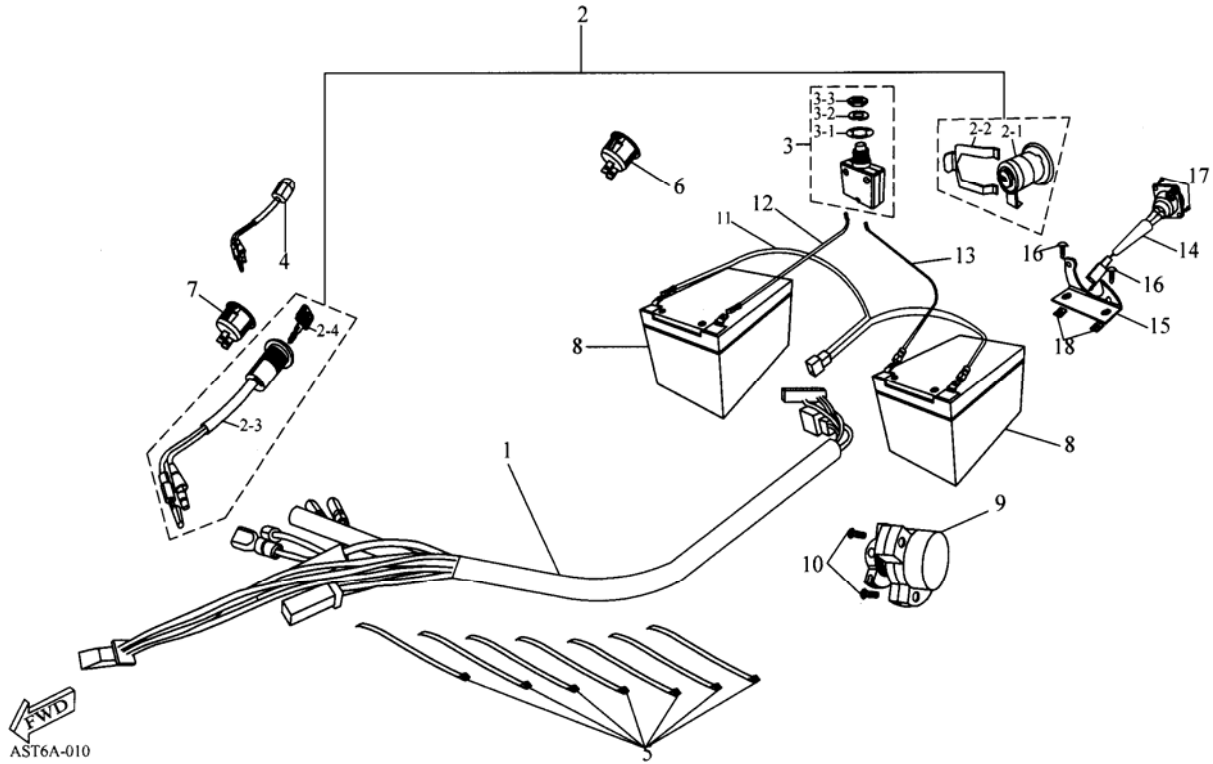
SALES MARK	P/N	DESCRIPTION	PART NO.		Q'TY	REMARK	
★	D09-01	REAR WHEEL ASS'Y	030F01-42800-A1		2		
★	D09-01-01	TIRE	030F01-42711-A0		2		
★	D09-01-02	INNER TUBE	030F01-42712-00		2		
★	D09-01-03	REAR RIM ASS'Y	030F01-42806-01		2		
★	D09-01-03-01	WHEEL RIM-OUTER	030F01-42701-00		2		
★	D09-01-03-02	WHEEL RIM-INNER	030F01-42702-00		2		
★	D09-01-03-03	SHAFT CONNECTER-REAR	030F01-42804-01		2		
★	D09-01-03-04	ROUND HEADED NUT	94022-08000-B		6	M8	
	D09-01-03-05	SPRING WASHER	94111-0814015-B		6	ψ8×ψ14.5×1.5	
	D09-01-03-06	HEX BOLT	92000-08016-B		6	M8×16	
	D09-02	PLAIN WASHER	94101-1440045-C		2	ψ14×ψ40×4.5	
★	D09-03	INSERT LOCK NUT	90351-14000-C		2	M14	
★	D09-04	COTTER PIN	94201-32320		2		
★	D09-05	RUBBER CAP	030F01-42730-00		2		

D-10 ELECTRICAL PARTS



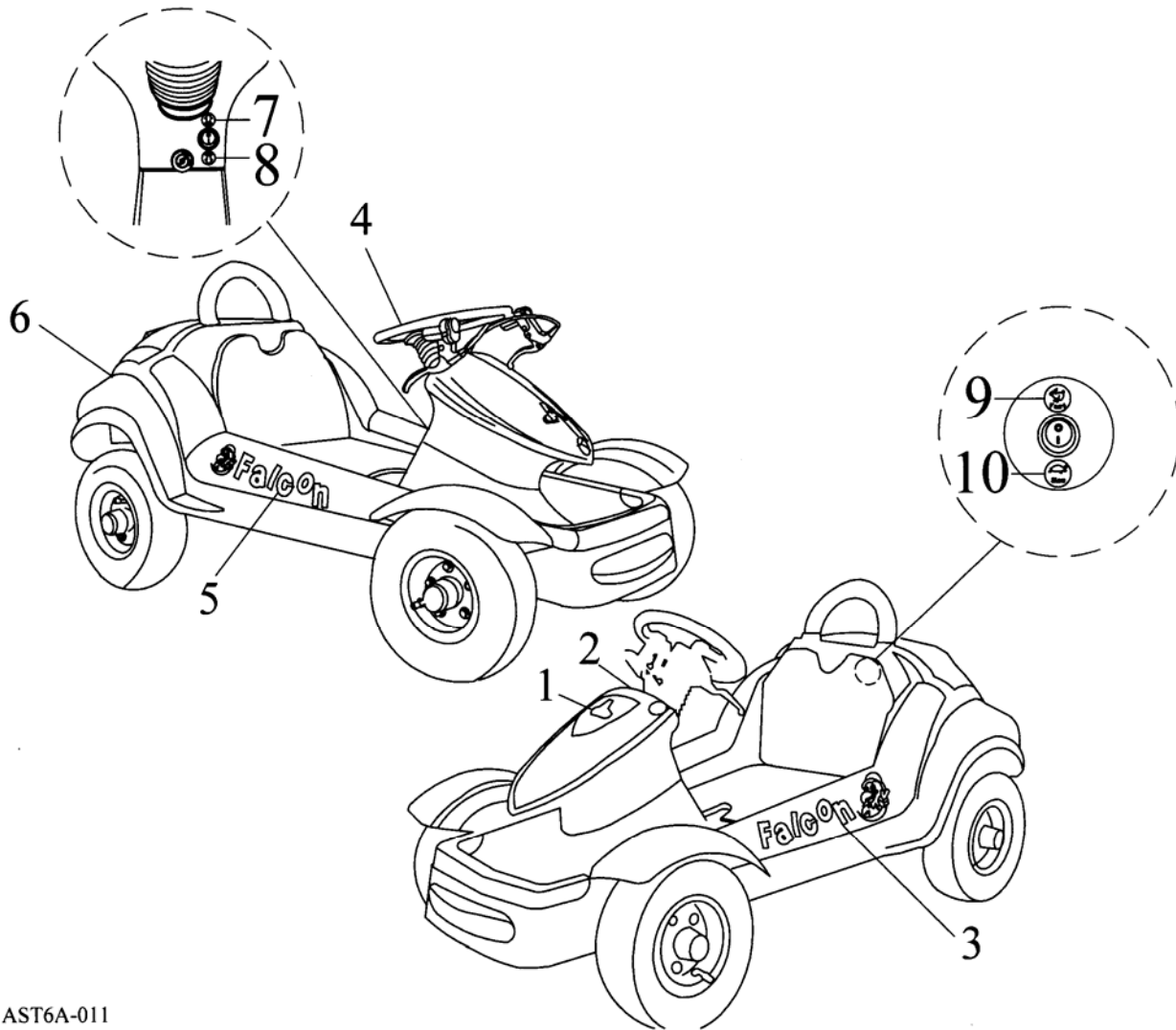
SALES MARK	P/N	DESCRIPTION	PART NO.		Q'TY	REMARK
★	D10-01	MAIN WIRE HARNESS	030F03-32100-00		1	
★	D10-02	SWITCH ASS'Y	030F03-35010-00		1	
★	D10-02-01	ENGINE COVER LOCK SWITCH	030F03-77240-00		1	
★	D10-02-02	FIX PLATE	030F01-77241-00		1	
★	D10-02-03	MAIN SWITCH ASS'Y	030F03-35100-00		1	
★	D10-02-04	KEY	030F03-35013-00		1	
★	D10-03	LOAD PROTECT	030F03-35020-00		1	
	D10-03-01	INDICATE PLATE	030F03-35021-00		1	
	D10-03-02	SPRING WASHER	030F03-35022-00		1	
	D10-03-03	HEX NUT			1	
★	D10-04	BATTERY INDICATE LIGHT	030F03-35014-00		1	
	D10-05	STRAP	030F01-90768-00		7	
★	D10-06	SWITCH-BLACK	030F03-35015-00		1	
★	D10-07	SWITCH-RED	030F03-35016-00		1	
★	D10-08	BATTERY-12V50AH	030F09-31500-00		2	

D-10 ELECTRICAL PARTS



SALES MARK	P/N	DESCRIPTION	PART NO.		Q'TY	REMARK	
★	D10-09	V.R.	030F03-35030-00		1		
	D10-10	PAN PHILLIPS BOLT, AFTER NO.RGAAST6A05T000085 USE	93500-05012-C		2	M5×12	
★	D10-11	CONNECT CABLE	030F09-32104-00		1		
★	D10-12	BATTERY CABLE-RED	030F09-32101-00		1		
★	D10-13	BATTERY CABLE-BLACK	030F09-32102-00		1		
★	D10-14	CHARGER BASE	030F03-32110-00		1		
★	D10-15	CHARGER BASE FIX PLATE	030F03-50510-00		1		
	D10-16	TAPPING SCREW	93903-04012-K		2	M4×12	
	D10-17	FLAT HEAD PHILLIPS BOLT	93907-03010-B		2	M3×10	
	D10-18	U PLATE NUT	90344-04000-C		2	M4	

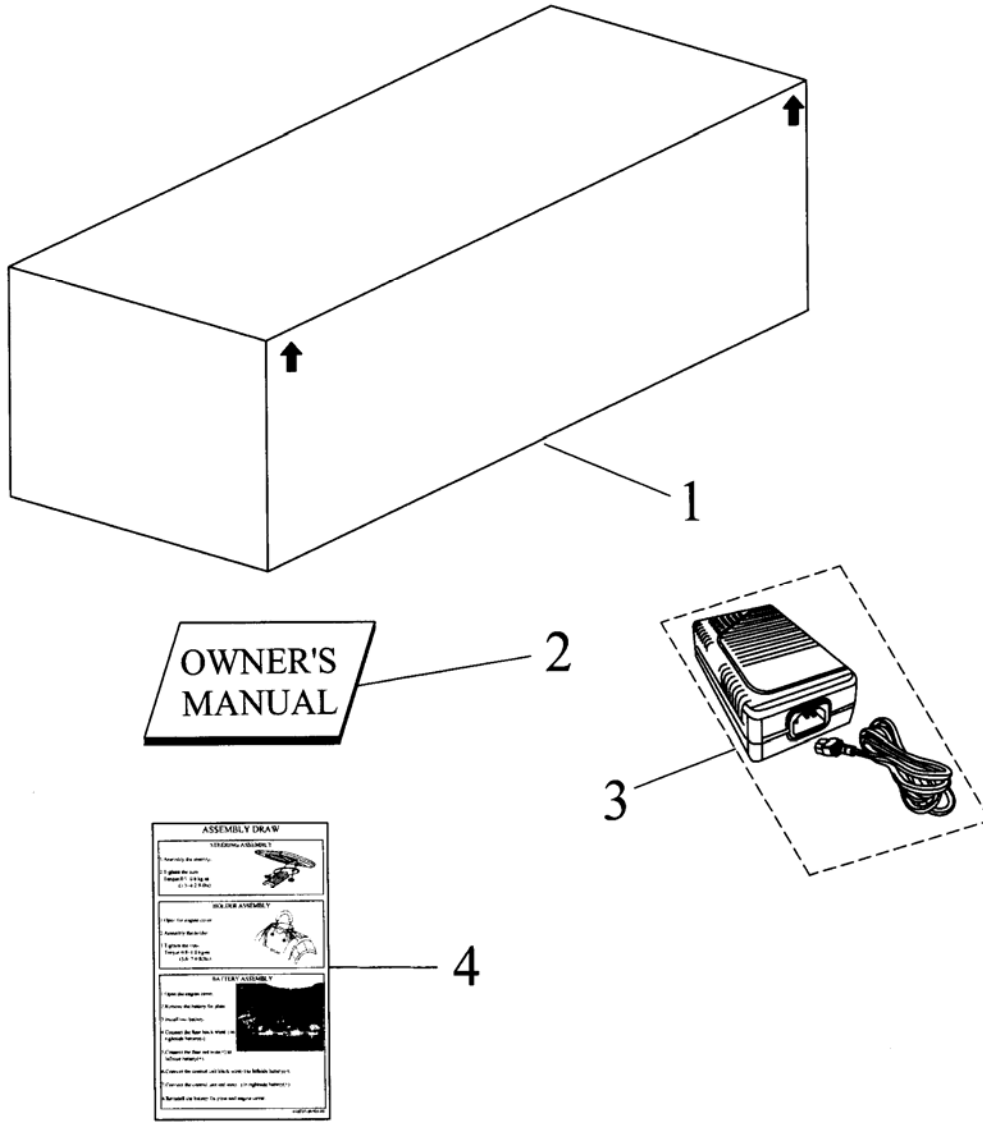
D-11 DECAL



AST6A-011

SALES MARK	P/N	DESCRIPTION	PART NO.		Q'TY	REMARK
★	D11-01	DECAL-HANDLE BAR UP COVER	030F01-87760-00		1	
★	D11-02	DECAL-SPEED	030F01-87713-00		1	
★	D11-03	DECAL-FALCON(L)	030F01-87728-00		1	
★	D11-04	DECAL-WARNING	030F03-87752-00		1	
★	D11-05	DECAL-FALCON(R)	030F01-87727-00		1	
★	D11-06	DECAL-AERO(REAR)	030F01-87755-00		1	
★	D11-07	DECAL-FORWARD	030F03-87772-00		1	
★	D11-08	DECAL-REVERSE	030F03-87773-00		1	
★	D11-09	DECAL-FAST	030F03-87774-00		1	
★	D11-10	DECAL-LOW	030F03-87775-00		1	

D-12 STANDARD ACCESSORY



AST6A-012

SALES MARK	P/N	DESCRIPTION	PART NO.		Q'TY		
	D12-01	PACKING	030F01-89005-00		1		
	D12-02	OWNER'S MANUAL	030F03-89500-00		1		
★	D12-03	BATTERY CHARGER	030F09-31550-00		1		
	D12-04	ASSEMBLY DRAW	030F03-89501-00		1		