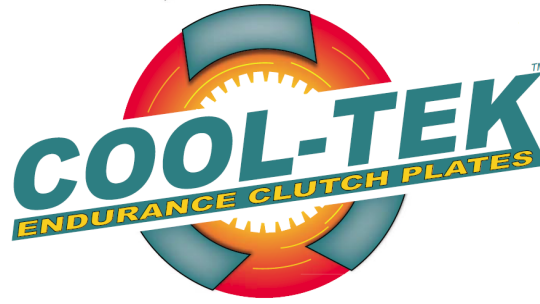
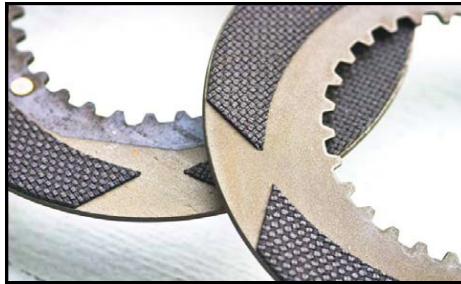


FunParts Xpress

FPX EXCLUSIVE Cool-Tek Endurance Clutch



Close up view

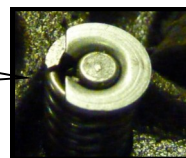


Segmented design

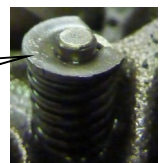
- **LAST LONGER THAN OEM**
- **CLEANER OIL**
- **COOLER RUNNING**
- **EXTENDED OIL CHANGES**
- **COST LESS THAN OEM**

Part #	Description	Price
1 00 K0002CT	Clutch Kit, GX/G160 200 Cool Tek Complete	87.92
1 00 K0001CT	Clutch Kit, GX/G240 270 Cool Tek Complete	92.45
06360840HD	Washer, Thrust 20mm (GX160 & GX200)	6.99
07612210HD	Washer, Thrust 25mm (GX240 & GX270)	7.58
06359380HD	Center, Clutch (GX160 & GX200)	30.59
07607360HD	Center, Clutch (GX240 & GX270)	30.59
06359610HD	Sprocket Comp., Drive (GX160 & GX200)	50.99
07607510HD	Sprocket Comp. Drive (14T) (GX240 & GX270)	53.00
03971250HD	Shaft Comp., P.T.O. (28T)	70.35
43699550CF	Plate, Clutch Friction Disc Cool Tek	18.31
03970340HD	Plate, Clutch Metal HD (Smooth Type STD)	8.10
03970420CF	Plate, Clutch Pressure Disc Cool Tek	18.31
03970670T	Holder, Clutch Spring (Spring Holder Clips)	1.41
03970590HD	Spring, Clutch Free "FPX"	1.15
10006	Seal, GX Output Sft High Heat Viton (Replmt for 00651360)	8.65
10007	Seal, GX Reduc.Input Sft High Heat Viton 5-6.5HP	8.99
10008	Seal, GX Reduc.Input Sft High Heat Viton 8-9HP	7.78

NOTE: WHEN INSTALLING COOL TEK PLATES YOU MUST USE NEW SPRNG HOLDER CLIPS. THEY SHOULD LOOK LIKE THIS AFTER INSTALLATION.



NOT GOOD





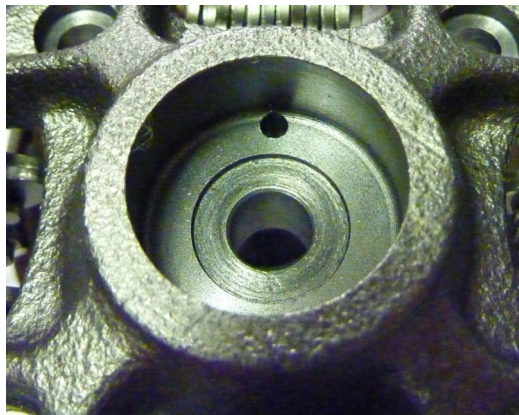
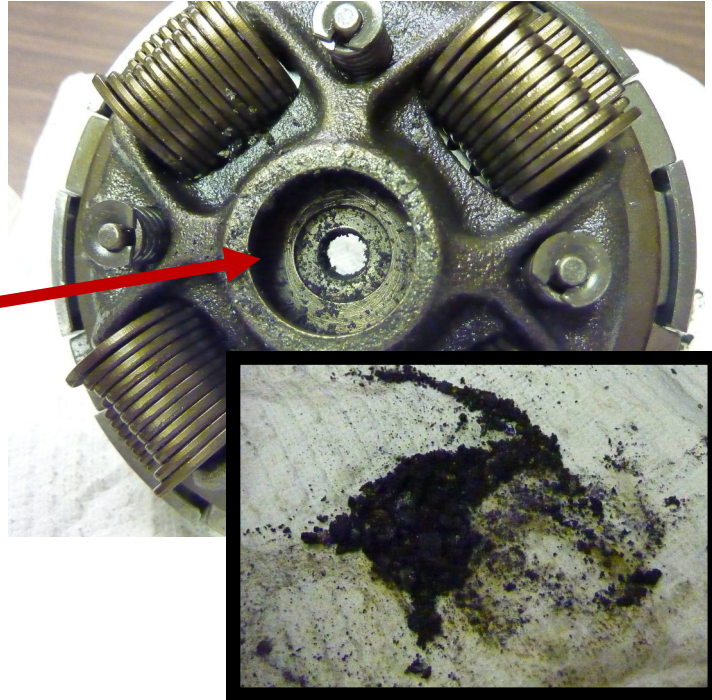
FPX Tech-Tip

Longer life out of your new Cool-Tek clutches.

When installing your new Cool-Tek Endurance Clutch Plates make sure all oiling orifices are completely cleaned.

Here is an example of the oiling orifice in weight holder clogged with debris.

WARNING: Severe plate, center and sprocket wear will occur if not cleaned. See example below of what it should look like after cleaning.



NOTE: WHEN INSTALLING COOL TEK PLATES YOU MUST USE NEW OEM SPRING HOLDER CLIPS. THEY SHOULD LOOK LIKE THIS AFTER INSTALLATION.

