



FPX GX-240, GX-270 Parts & Price Guide revision C

Updated Jan 18, 2011

Written by the J&J Technical Team

Kevin Bell, Dan Hansen, Leon Wilbanks, Eric Hahl.

Manual Design & Layout

Eric Hahl

Models Covered:

Honda GX-240 & GX-270

Part No. 1-60-0061

FunParts Xpress

4897 Indian School Rd NE
Suite 150
Salem, OR 97305-1126

Toll Free Phone: 1-800-854-3140

Phone: 1-503-304-8899

Toll Free Fax: 1-800-366-7505

Fax: 1-503-304-1899

Also from FunParts Xpress

For parts description and pricing information see:

FPX Go-Kart Parts & Price Guide - Vol. 1

Visit our website for updated manuals (PDF Format)

www.jjamusements.com and www.funpartsexpress.com

About this guide

This aim of this manual is to help you and your maintenance team keep your Go-Karts in top condition.

This guide contains drawings, illustrations and photographs of parts and accessories for the Honda GX-240 and GX-270 engines used in J&J Go-karts.

Contents

Safety First	4
General Order and Shipment Policy	8
Ordering Information	10
To Place An Order:	10
Return Policy	10
PARTS	
Cylinder Head - GX240 & GX270	12
Cylinder - GX240 & GX270	13
Crank Case - GX240 & GX270	14
Flywheel - GX240 & GX270	15
Ignition Coil - GX240 & GX270	16
Crankshaft - GX240 & GX270	17
Piston - GX240 & GX270	18
Camshaft - GX240 & GX270	19
Fan Cover - GX240 & GX270	20
Starter - GX240 & GX270	21
Control - GX240 & GX270	22
Air Filter - GX240 & GX270	23
Carburetor - GX240 & GX270	24-25
Muffler - GX240 & GX270	26
Fuel Tanks - GX240 & GX270	27
1:2 Reduction - GX240 & GX270	28-29
FPX Exclusive Heavy Duty Go-Kart Clutch Plates!	30
Advantages of new FPX clutch plates	31
K&N AIR FILTERS	32
OIL EXTRACTION & DISPENSING	33
FAX ORDER FORMS	34-36

Safety First

Proper service and repair procedures are vital to safe, reliable operation of Go-Karts and Bumper Boats as well as personal safety of those performing repairs. Refer to your Service Manual for servicing and repairing information. Always use safe and effective methods. The Service Manual contains many NOTES, CAUTIONS and WARNINGS which should be followed along with standard safety procedures to eliminate the possibility of personal injury or improper service which could be damaging to your equipment or compromise its safety.

It is important to note that repair procedures, techniques, tools and parts for servicing Go-Karts and Bumper Boats as well as the skill and experience of the individual performing work vary widely. It is not possible to anticipate all conceivable ways or conditions under which Go-Karts and Bumper Boats may be serviced or to provide cautions to all possible hazards that may result. Standard precautions should be used when handling toxic or flammable fluids, and safety goggles or other protection should be used during cutting, grinding, chiseling, prying or any other process that can cause material removal or projectiles. J&J recommends use of safety goggles or approved glasses during all servicing.

All information contained in this Parts Guide is based on the latest product information and prices available at time of printing. We reserve the right to make changes at any time without notice. No part of this publication may be reproduced, stored in a retrieval system or transmitted, in any form by any means, electronic, mechanical, photocopying, recording, or otherwise, without the prior written permission of J&J Amusements, Inc. A Corporation of Oregon and FunParts Xpress. This includes text, figures and tables.

BEFORE SERVING

To eliminate unnecessary work, careful reading of the applicable section is recommended before starting to service a go-kart. Photographs, diagrams, notes, cautions, warnings, and detailed descriptions have been included wherever necessary. Nevertheless, even a detailed account has limitations, a certain amount of basic knowledge is also required for successful work.

Especially note the following:

Dirt

Before removal and disassembly, clean the go-kart. Any dirt entering the engine or other parts will work as an abrasive and shorten the life. For the same reason, before installing a new part, clean off any dust or metal filings.

Tightening Sequence

Generally, when installing a part with several bolts, nuts or screws, start them all in their holes and tighten them to a snug fit. Then tighten them evenly in a cross pattern. This is to avoid distortion of the part and/or causing gas or oil leakage. Conversely when loosening the bolts, nuts or screws, first loosen all of them by about a quarter of turn and then remove them. Where there is a tightening sequence indication in this Service Manual, the bolts, nuts or screws must be tightened in the order and method indicated.

Torque

When torque values are given in this Service Manual, use them. Either too little or too much torque may lead to serious damage. Use a good quality, reliable torque wrench.

Force

Common sense should dictate how much force is necessary in assembly and disassembly. If a part seems especially difficult to remove or install, stop and examine what may be causing the problem. Whenever tapping is necessary, tap lightly using a wooden or plastic-faced mallet. Use an impact driver for screws (particularly for the removal of screws held by a locking agent) in order to avoid damaging the screw heads. It also may be necessary to apply heat to some parts held with locking compound.

Edges

Watch for sharp edges, especially during major engine disassembly and assembly. Protect your hands with gloves or a piece of thick cloth when lifting the engine or turning it over.

High-Flash Point Solvent

A high- flash point solvent is recommended to reduce fire danger. A commercial solvent commonly available in North America is Stoddard solvent (generic name). Always follow manufacturer and container directions regarding the use of any solvent.

Gasket, O-Ring

Do not reuse a gasket or O-ring once it has been in service. The mating surfaces around the gasket should be free of foreign matter and perfectly smooth to avoid oil or compression leaks.

Liquid Gasket, Non-Permanent Locking Agent

Follow manufacturer's directions for cleaning and preparing surfaces where these compounds will be used. Apply sparingly. Excessive amounts may block engine oil passages and cause serious damage. An example of a non-permanent locking agent commonly available in North America is Loctite® Lock'n Seal (Blue).

Press

A part installed using a press or driver, such as a wheel bearing, should first be coated with oil on its outer or inner circumference so that it will go into place smoothly.

Oil Seal and Grease Seal

Replace any oil or grease seals that were removed with new ones since removal generally damages seals. When pressing in a seal which has manufacturer's marks, press it in with the marks facing out. Seals should be pressed into place using a suitable driver, which contacts evenly with the side of the seal, until the face of the seal is even with the end of the hole. Always use assembly oil or grease on lip (sealing edge) of any seal prior to assembly.

Circlip, Retaining Ring

Replace any circlips and retaining rings that were removed with new ones, as removal weakens and deforms them. When installing circlips and retaining rings, take care to compress or expand them only enough to install them and no more.

Cotter Pin

Replace any cotter pins that were removed with new ones since removal deforms and breaks them.

Lubrication

Engine wear is generally at its maximum while the engine is warming up and before all rubbing surfaces have an adequate lubricative film. During assembly, oil or grease (whichever is more suitable) should be applied to any rubbing surface which has lost its lubricating film. Old grease and dirty oil should be cleaned off. Deteriorated grease has lost its lubricating quality and may contain abrasive foreign particles.

Do not use just any oil or grease. Some oils and greases in particular should be used only in certain applications and may be harmful if used in an application for which they are not intended. This manual makes reference to molybdenum disulfide grease (MoS₂) in the assembly of certain engine and chassis parts. Always check manufacturer recommendations before using such special lubricants.

Replacement Parts

When there is a replacement instruction, replace these parts with new ones every time they are removed. These replacement parts will be damaged or lose their original function once removed.

Inspection

When parts have been disassembled, visually inspect these parts for following conditions or other damage. If there is any doubt as to condition of them, replace them with new ones.

Abrasion	Crack	Hardening	Warp
Bent	Dent	Scratch	Wear
Color change	Deterioration	Seizure	

Specifications

Specification terms are defined as follows:

“Standards”: Show dimensions or performances which brand-new parts or systems have.

“Service Limits”: Indicate the usable limits. If measurement shows excessive wear or deteriorated performance, replace the damaged parts.

General Order and Shipment Policy

J&J Amusements, Inc. appreciates our customers. We will do our best to provide quality parts and service. Your business is important to us so we want you to fully understand our policy guidelines. Remember they are only guidelines: questions, suggestions and even complaints are always welcome.

NEW ACCOUNTS: New accounts are welcome! Open account terms are available to customers upon credit approval. Contact us for a credit application. Please be sure to furnish accurate, complete, year round mailing and shipping addresses and phone numbers. Credit approval takes approximately 2 weeks.

OPEN ACCOUNT TERMS: Customers with approved credit applications are allowed net prices as long as payment is received within 30 days of invoice date. A late fee of 1 1/2% per month will be assessed to the balance on any past due invoice. In addition, if your account is 60 days past due can be placed on CREDIT HOLD UNTIL PAST DUE BALANCE IS RESOLVED.

VISA, MASTERCARD, AMERICAN EXPRESS: For your convenience we accept VISA, MasterCard and American Express. We never charge your credit card until we ship your order.

BANK WIRE: Please contact us for Bank Wiring instructions. E-mail: Accounting@jjamusements.com

ORDERING: It is important to order all parts by correct part number. This will speed your order and help eliminate errors. You may phone, fax or e-mail your orders.

Phone orders 1-800-854-3140 International orders call 1-503-304-8899

Fax orders 1-800-366-7505 International orders call 1-503-304-1899. To ensure accuracy, fax form in the back of this book must be filled out completely with customer number, bill to, ship to, phone number and shipping (ground, 2nd day, overnight, overnight Saturday, or truck line). Every line item must have the part number, quantity and description clearly printed.

E-Mail Orders: parts@funpartsexpress.com

Use our Online E-Mail Parts Order Form, e-mail directly to J&J: parts@funpartsexpress.com

HOURS: Business hours are 8:00am to 4:30pm Pacific Time Monday thru Friday. Fax and e-mail orders can be received 24 hours a day.

PRICES: J&J Amusements, Inc. makes every effort to offer competitive prices and to maintain pricing for the life of the annual catalog. In some cases, price adjustments must be made and J&J Amusements, Inc. reserves the right to change pricing without notice.

BACK ORDERS: Back orders are shipped automatically with the same terms as the original order. Back orders will be shipped ASAP unless you elect to batch all back orders for periodic shipment or cancel all back orders. You must notify J&J Amusements, Inc. in writing if you wish to utilize either of the above options.

SHIPPING: We will endeavor to ship all orders same day and do our best to follow your special shipping instructions. We normally ship orders under 150 lbs. by UPS. Larger orders will be shipped by freight lines.

COD SHIPMENT: Large orders shipped COD will be divided into two or more cartons. The total

COD amount will be pro-rated by value of each carton's contents. COD orders of \$1,000 or more are shipped cashiers check only. COD charge per box is \$9.00.

REFUSED COD SHIPMENTS: Our FULL restocking fee plus freight both ways, will be charged to your next order if you refuse a COD shipment.

BAD CHECKS: Any account having a returned check (for any reason) will be placed on COD cash only. To avoid legal action, the check must be redeemed by a certified check or bank money order and all returned checks will be charged a \$25.00 fee. If legal action is necessary, the customer will be responsible for all charges incurred in collection.

URGENT PART ORDERS: UPO's should be submitted only when fastest service is required to provide individual customer satisfaction. UPO's are given highest priority handling by J&J Amusements, Inc. This order method should not be used for stocking purposes. All extra shipping and handling charges incurred will be charged to customer.

SHORTAGES: Must be reported at the time the package is opened - NO EXCEPTIONS. All orders are checked for accuracy after picking and are weighed to 1/10th of an ounce to give us three ways of checking.

HIDDEN DAMAGE: Must be reported at the time the package is opened - NO EXCEPTIONS. ALL BOXES AND PACKING MUST BE SAVED to receive credit for damages. We will pay shipping charges.

FREIGHT DAMAGE: If packages delivered by freight carrier arrive in broken or mutilated boxes or if shipments are incomplete, be sure the driver notes on your bill of lading. Claims against freight carriers are made by the recipient, not J&J Amusements, Inc..

RETURNED GOODS POLICY: A Return Merchandise Authorization (RMA#) is required for all returns. NO EXCEPTIONS. The RMA# must be displayed on exterior of return shipping carton. Only items authorized (listed) on RMA# may be returned. Obsolete and discontinued merchandise cannot be returned (current merchandise is that which appears in current annual catalog/price book). A 15% restocking fee will be charged on all returns, except for errors made by J&J Amusements, Inc. Freight will be paid by customer except for shipping errors caused by J&J Amusements, Inc. Returned merchandise must be in good resale condition, in original J&J Amusements, Inc. package (where applicable) and cannot be altered with customer labels, stickers, numbers etc.. Returned goods which do not have an RMA# will be refused.

WARRANTY RETURN POLICY: All warranty item returns must be authorized by the Warranty Department and have an assigned RMA# before any adjustment or credit will be given. The RMA# must appear next to the shipping label on all returned items for proper credit to be issued. All credits issued will be applied fo future purchases

TAXES: Prices in this book do not include your state, local, or other applicable sales taxes or any other taxes that may be required. The purchaser is responsible for all tax associated with purchasing goods and must take all steps required to pay directly all taxes due.

DOUBLE CHECK ALL PART NUMBERS AND DESCRIPTIONS BEFORE PLACING ORDER

Please call or e-mail us at parts@funpartsexpress.com, Toll Free at 1-800-854-3140 or 1-503-304-8899 for assistance.

E-MAIL: parts@funpartsexpress.com Internet: <http://www.funpartsexpress.com>

TOLL FREE PHONE ORDERING: 1-800-854-3140

INTERNATIONAL PHONE ORDERING: 1-503-304-8899

Prices subject to change without notice.

Ordering Information

To Place An Order:

J&J & FPX makes it easy to place your order anytime. Order online, send us a fax, e-mail or give us a call. All orders receive immediate attention and ship straight to your facility.

The preferred method of ordering is at our Online Store <http://www.funpartsxpress.com>. If you fax your order, it's very important to order all parts by correct part number. This will speed your order and help eliminate errors. You may phone your order using our toll free number, 1-800-854-3140 or fax your order to 1-800-366-7505. For customers outside the US, call 503-304-8899 or fax 503-304-1899. E-Mail, our address is parts@funpartsxpress.com

****NOTE ON FAX ORDERS:** Fax forms in the back of this book must be filled out completely with customer number, bill to, ship to, phone number and shipping (ground, 2nd day, overnight, overnight Saturday). Every line item must have the part number, quantity and description. See next page for an order form example.

Office Hours

Our offices are open to receive phone orders

Pacific	8:00am to 4:30pm
Mountain	9:00am to 5:30pm
Central	10:00am to 6:30pm
Eastern	11:00am to 7:30pm
Greenwich	4:00pm to 12:30am
Geneva	5:00pm to 1:30am
Buenos Aires	1:00pm to 9:30pm
Tokyo	1:00am to 9:30am
Sydney	2:00am to 10:30am

Return Policy

- ABSOLUTELY NO RETURNS PERMITTED AFTER 30 DAYS
- RMA NUMBER REQUIRED FOR ALL RETURNS, ALL ITEMS RECEIVED WITHOUT RMA NUMBER DISPLAYED ON OUTSIDE OF PACKAGE WILL BE REFUSED
- NO RETURNS WITHOUT PRIOR AUTHORIZATION

Ordering Procedures:

Follow these simple guidelines, whether you order Online, Call, Fax or E-mail.

When you Order Online:

Go to <http://www.funpartsxpress.com>
Use your customer number
Fill out all information correctly
Note shipping method desired

When you call, please have:

1. Your customer number
 2. Item number and description
- Current Parts Manual for quick reference

When you fax:

1. List customer number, phone number, and proper bill to and shipping address.
2. List quantity, item number and description clearly
3. Note shipping method desired

When you e-mail:

1. List customer number and proper bill to and shipping address.
2. List quantity, item number and descriptions clearly
3. Note shipping method desired
4. List return e-mail address and phone number

Orders will ship UPS Regular if not stated otherwise.

Note:

The follow page depicts the Fax Order Form found in the back of this book. It is important that you include all the information as show on this diagram to ensure properprocerssing of your order in a timely manner.

Fax Order Form



Photocopy this order form.
 If you wish to confirm receipt call or e-mail:
 Phone: 1503-304-8899 or 1-800-854-3140
 E-mail: parts@funpartsxpress.com

FAX ANYTIME - Day or Night
 Toll Free (USA) 1-800-366-7505
 International 1-503-304-1899

For the latest information visit www.funpartsxpress.com and www.jjamusements.com

Date: 10-16-06 Time: 9:18 AM/PM Customer # my customer # (Required for all orders)
 E-mail: John @ johnsfuncenter.com

Bill to: Family Fun USA Ship to: Family Fun USA
123 Fun Street 123 Fun Street
Funtown, USA 55512 Funtown, USA 55512

Phone # (123) 123 - 1234 Ext. _____ Fax # (123) 123 - 1234
 PO# or Contact Name: John Sample

Visa M/C _____ Discover _____ AMEX _____

Card Number: 1 2 3 4 5 6 7 8 9 1 2 3 4 5 6 7 Expires: 11-23-08

Name on card: John @ Sample Signature: Sign here
 (Print name exactly as it appears on the credit card.)

Ship via UPS (please <input checked="" type="checkbox"/> one)	<input type="checkbox"/> UPS Ground (3-7 days)	<input type="checkbox"/> UPS Red (1 Day)
	<input type="checkbox"/> UPS Orange (3 days)	<input type="checkbox"/> UPS Red Saturday (Select areas only)
	<input checked="" type="checkbox"/> UPS Blue (2 days)	<input type="checkbox"/> INTERNATIONAL

Part #	Qty	Description	Price
<u>30234880</u>	<u>1</u>	<u>Ring set, Piston, GX240</u>	<u>\$24.38</u>
<u>16724500</u>	<u>5</u>	<u>Plug, Spark</u>	<u>\$3.32 each</u>
3			
4			
5			
6			
7			
8			

Please be sure to fill in all the required information on this form in a clear manner. (please print neatly)

Make sure all credit card information is accurate.

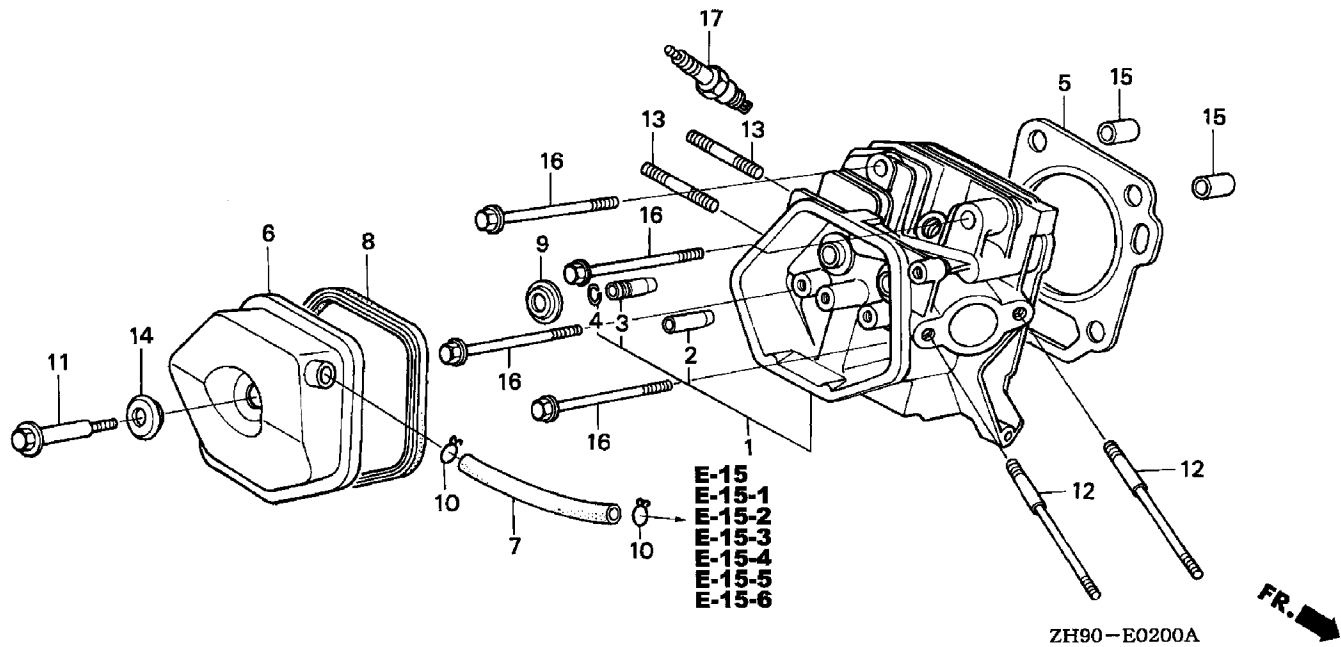
Make sure you select the type of shipping otherwise the default shipping is UPS Ground.

You are responsible for all content and accuracy. Please note: Your order may not be processed if you have left out any required information.

Special instructions: Please call if you can't ship the order in full.

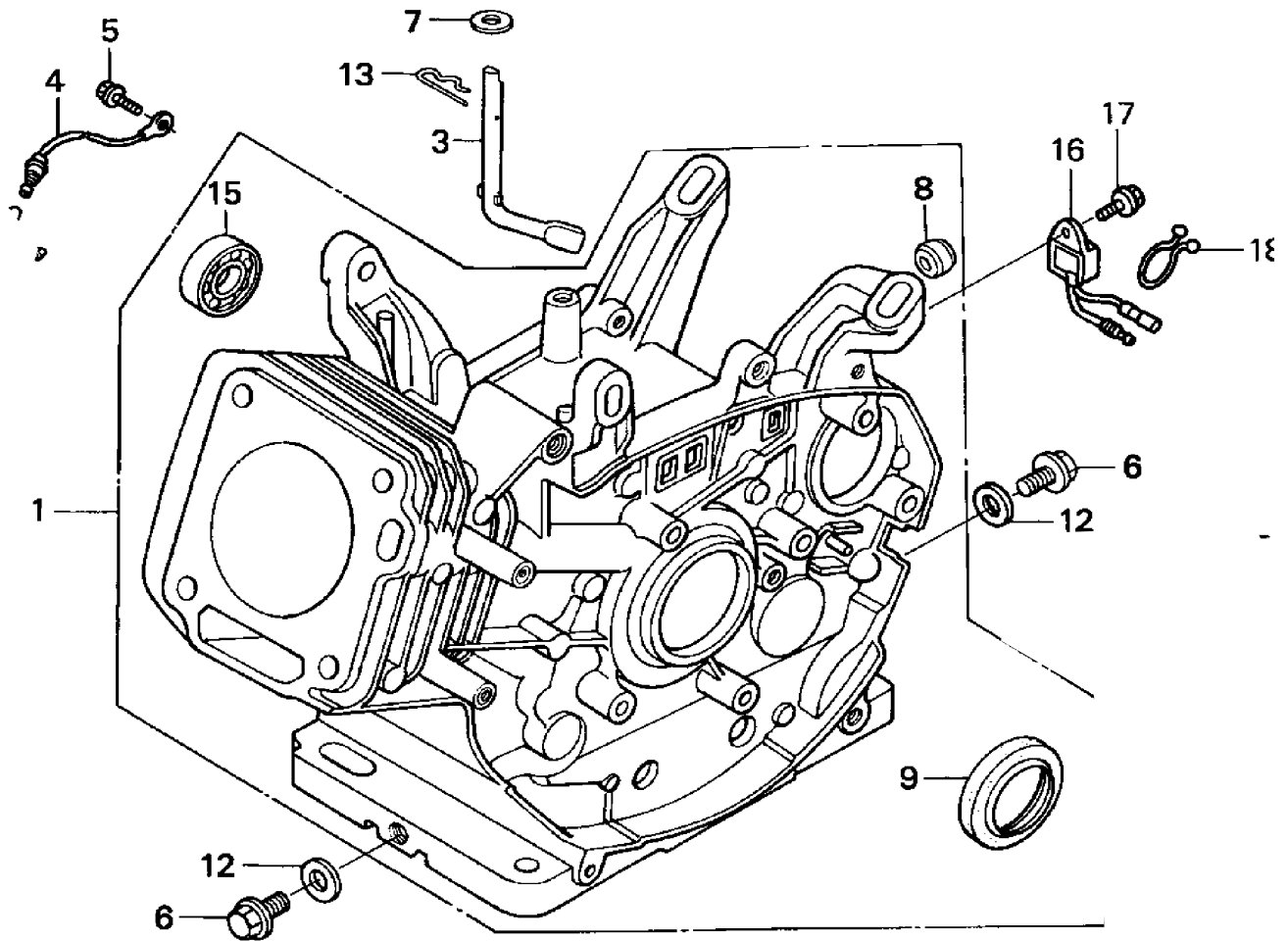
Thanks, John

Cylinder Head - GX240 & GX270



Ref #	FPX #	Honda #	Qty	Description	Price
01	7603483	12200-ZH9-405	1	12200-ZH9-405 Cylinder Head Comp	\$329.46
02	41791640	12204-ZE2-306	1	12204-ZE2-306 Guide, Invalve (Oversized)	\$11.67
03	20895630	12205-ZE2-305	1	12205-ZE2-305 Guide, Exhaust Valve	\$12.94
04	20895970	12216-ZE2-300	2	12216-ZE2-300 Clip, Valve Guide	\$1.75
05A	36785390	12251-ZE2-800	1	12251-ZE2-800 Gasket, Cylinder Head (GX240)	\$13.80
05B	36895770	12251-ZH9-000	1	12251-ZH9-000 Gasket, Cylinder Head (GX270)	\$17.38
**	43428200	04108-ZE2-000	1	04108-ZE2-000 Cover Kit, Head	\$48.03
06	43008850	12310-ZE2-020	1	12310-ZE2-020 Cover Comp., Head	\$37.21
07	45373120	95005-11001-30M	4.2"	95005-11001-30M Hose, Vacuum 11.0mm I.D.	\$0.55
08	43008930	12391-ZE2-020	1	12391-ZE2-020 Gasket, Head Cover	\$11.93
09	21574850	14775-ZE2-010	1	14775-ZE2-010 Seat, Valve Spring	\$2.61
10	03409840	17316-611-000	2	17316-611-000 Clip, Breather Tube	\$6.48
11	20270350	90014-ZE2-000	1	90014-ZE2-000 Bolt, Head Cover	\$5.11
12	20270430	90042-ZE2-000	2	90042-ZE2-000 Bolt, Stud, 8x127	\$6.81
13	2663433	90047-ZE2-000	2	92900-08032-0E Bolt, Stud (8x32)	\$1.67
14	22939180	90441-ZE2-010	1	90441-ZE2-010 Washer Comp., Head	\$4.95
15	01653240	94301-12200	2	94301-12200 Pin, Dowel 12x20	\$1.62
16	25453410	95701-10080-00	4	95701-10080-00 Bolt, Flange (10X80) Serial Start:1179419	\$2.17
17	16724430	98079-55846	1	Spark Plug, (BPR5ES) Hot 98079-55846	\$3.53
**	16724500	9807-55855	1	Spark Plug, (W16EPR-U) 98079-55855	\$3.68
**	14411120	98079-56846	1	Spark Plug, (BPR6ES) 98079-56846	\$3.26
**	14411200	98079-56855	1	Spark Plug, (W20EPR-U-ND) 98079-56855	\$3.73

Cylinder - GX240 & GX270



Ref #	FPX #	Honda #	Qty	Description	Price
01A	7759624	12000-ZE2-408	1	12000-ZE2-408 Barrel Assy, Cylinder (GX240)	\$398.99
01B	7623614	12000-ZH9-852	1	12000-ZH9-Q00 Cylinder Assy. GX270	\$526.70
03	47232270	16541-ZE2-010	1	16541-ZE2-010 Shaft, Governor Arm	\$8.79
04	42204060	32197-ZE2-003	1	32197-ZE2-003 Sub Harness	\$4.87
05	06368450	90013-883-000	2	90013-883-000 Bolt, Flange 6x12	\$1.58
06	19862310	90131-896-650	2	90131-896-650 Bolt, Drain Plug	\$3.94
06A	1-61-0039		1	NLA/Drain Plug Bolt Magnetic 12mm	\$16.31
07	20271340	90446-KE1-000	1	90446-KE1-000 Washer, 8.2x17x.08	\$2.15
08	2794048	91201-890-003	1	90801-ZE2-003 Plug Sealing	\$2.83
09	07564940		1	91201-890-003 Oil Seal, 30x46x8	\$8.94
12	01718680	94109-12000	1	94109-12000 Washer, Drain Plug 12mm	\$0.65
13	01155270	94251-08000	1	94251-08000 Pin, Lock 8mm	\$0.78
15	07089410	96100-62020-00	2	96100-62020-00 Bearing, Radial Ball (6202)	\$9.54

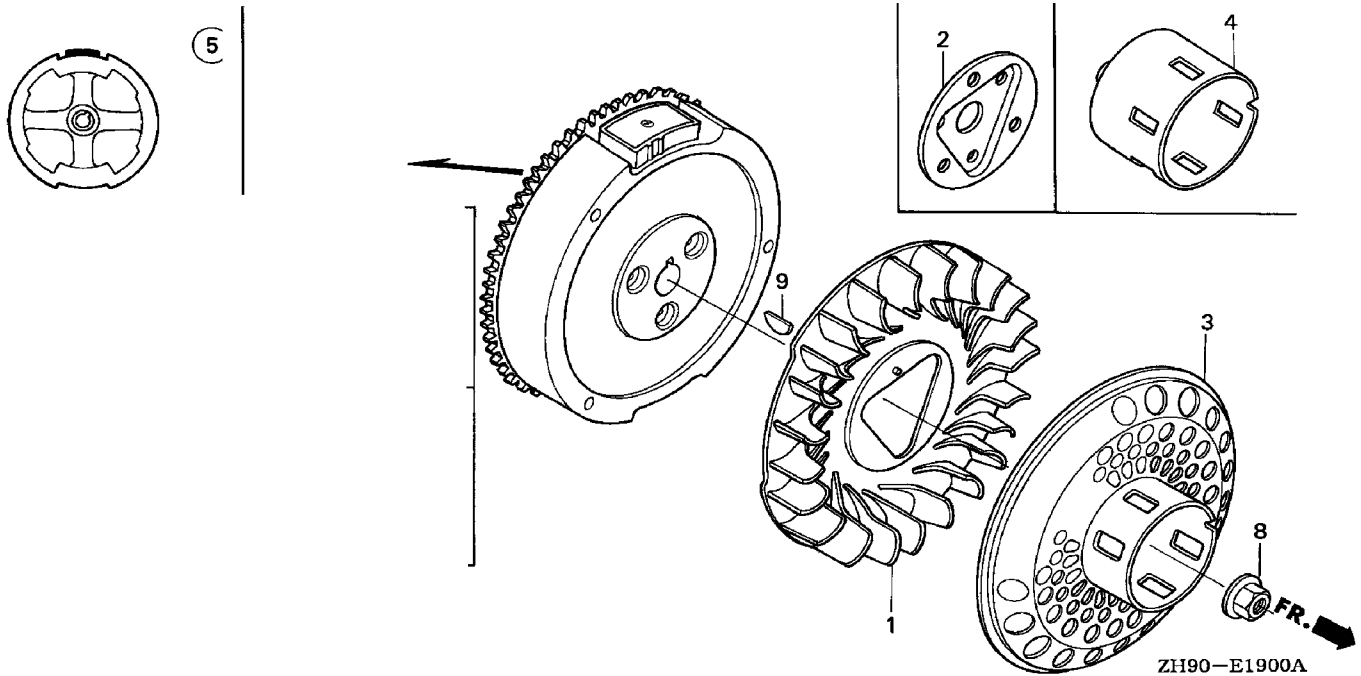
E-MAIL: parts@funpartsexpress.com Internet: <http://www.funpartsexpress.com>

TOLL FREE PHONE ORDERING: 1-800-854-3140

INTERNATIONAL PHONE ORDERING: 1-503-304-8899

Prices subject to change without notice. **13**

Flywheel - GX240 & GX270



Ref #	FPX #	Honda #	Qty	Description	Price
01	20262500	19511-ZE2-000	1	19511-ZE2-000 Fan, Cooling	\$23.18
03	36789350	28450-ZE2-W11	1	28450-ZE2-W11 Pulley Comp., Starter	\$26.19
04	36820690	31100-ZE2-831	1	31100-ZE2-831 Flywheel Comp (4 Pole) (GX270)	\$155.00
05	20263830	31100-ZE2-000	1	31100-ZE2-000 Flywheel Comp. Std. (GX270/240)	\$27.66
08	23269080	90201-ZE3-790	1	90201-ZE3-790 Nut, Special 16mm Serial Start:1146554	\$7.45
09	20271590	90741-ZE2-000	1	90741-ZE2-000 Key, Special Woodruff 25x18	\$2.83
11	36820690	31100-ZE2-831	1	31100-ZE2-831 Flywheel Comp (4 Pole) (GX270)	\$155.00

E-MAIL: parts@funpartsexpress.com Internet: <http://www.funpartsexpress.com>

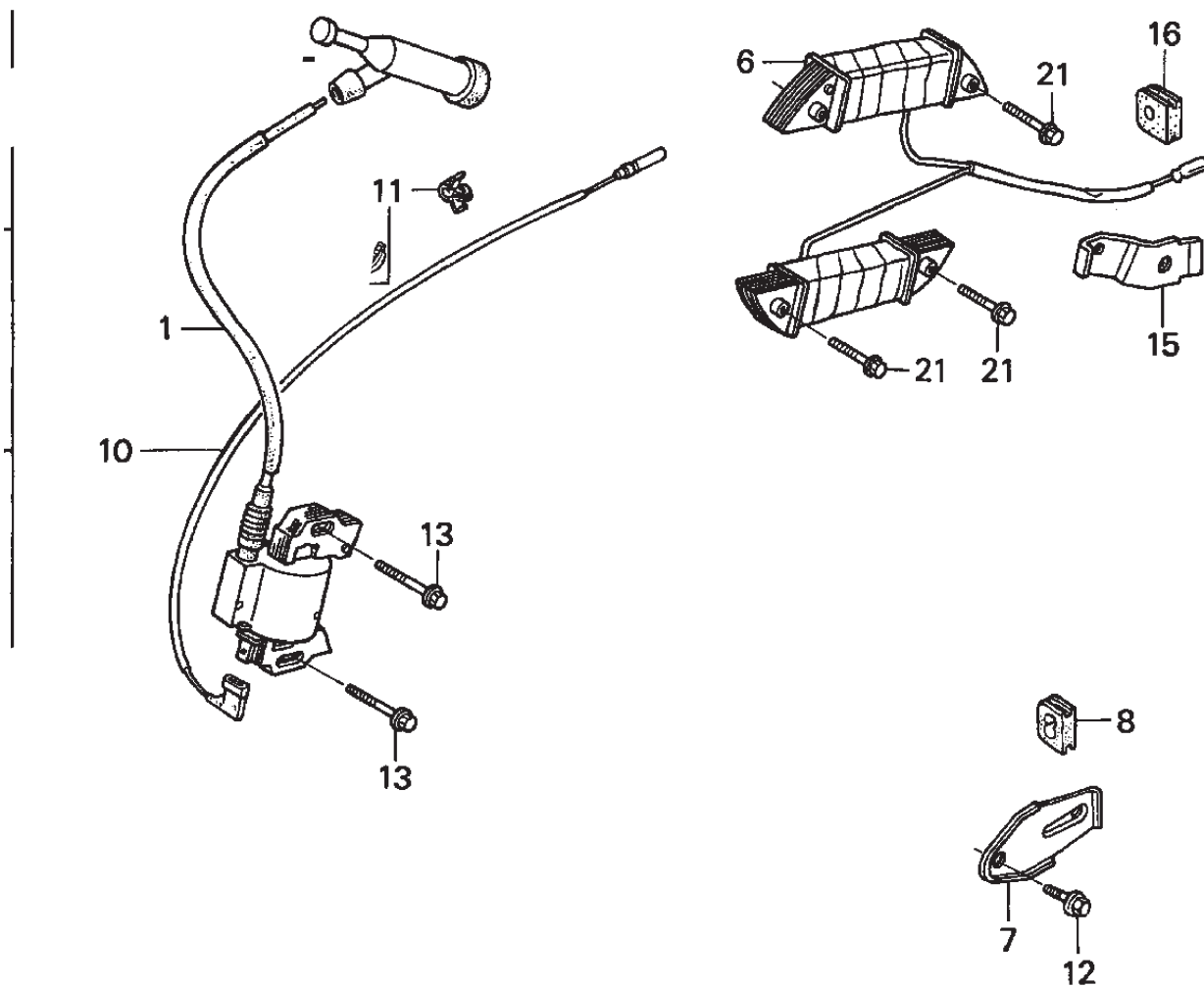
TOLL FREE PHONE ORDERING: 1-800-854-3140

INTERNATIONAL PHONE ORDERING: 1-503-304-8899

Prices subject to change without notice. **15**

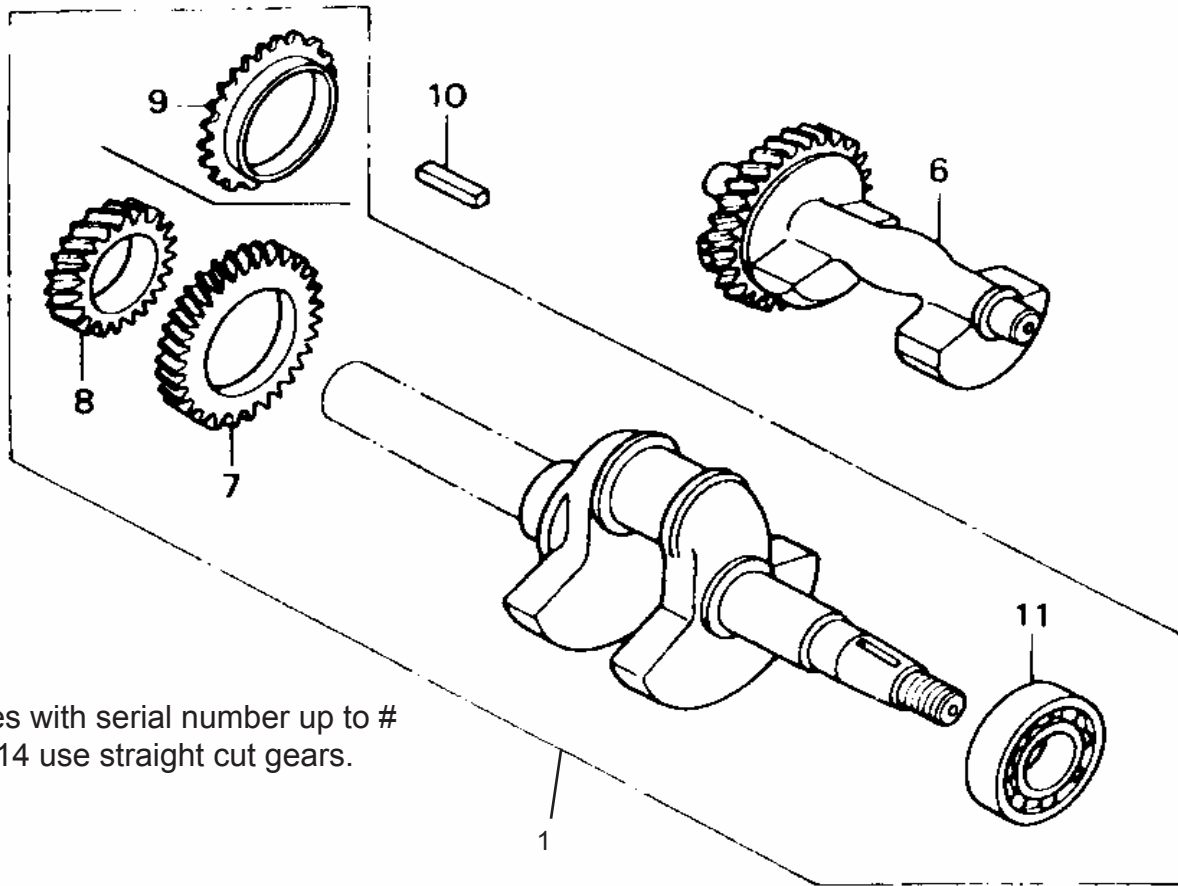
Ignition Coil - GX240 & GX270

Before ordering, Please check our website
for current promotions.
www.FunPartsXpress.com



Ref #	FPX #	Honda #	Qty	Description	Price
01	8632184	30500-ZF6-W02	1	30500-ZF6-W03 Coil Assy Ignition 8 & 9hp Serial S:1177028	\$89.62
02	35268370	30700-ZE1-013	1	30700-ZE1-013 Cap Assembly, Noise Suppressor	\$17.16
06	29466970	31510-ZE2-811	1	31510-ZE2-811 Coil, Lamp (12V/50W)	\$88.05
07	20265400	31511-ZE2-000	1	31511-ZE2-000 Clamp, Cord	\$4.73
08	20265570	31512-ZE2-000	1	31512-ZE2-000 Grommet, Cord	\$2.19
10	36840320	36101-ZE1-010	1	36101-ZE1-010 Wire, Stop Switch 370mm (GX160,240,270)	\$8.60
11	14291410	36103-ZE1-000	1	36103-ZE1-000 Holder, Stop Switch Cord	\$1.95
12	06368450	90013-883-000	1	90013-883-000 Bolt, Flange 6x12	\$1.58
13	06368520	90015-883-000	2	90015-883-000 Bolt, Flange 6x28	\$2.47
21	06360760	90017-883-000	2	90017-883-000 Bolt, Flange 6x32	\$2.53

Crankshaft - GX240 & GX270



Note:
Engines with serial number up to #
1494214 use straight cut gears.

Ref #	FPX #	Honda #	Qty	Description	Price
01A	37351720	13320-ZE2-010	1	13320-ZE2-010 Crankshaft Comp. (S Type) (GX240)	\$209.14
01B	8134348	13310-ZH9-800	1	13310-ZH9-800 Crankshaft Comp. (S Type) (GX270)	\$165.98
06A	36898170	13351-ZE2-010	1	13351-ZE2-010 Weight, Balancer	\$135.07
06B	2025542	13351-ZE2-000	1	13351-ZE2-000 Weight, Balancer (Use Up To Engine SN 1494)	\$116.93
07A	36898250	13352-ZE2-310	1	13352-ZE2-310 Gear, Balancer Drive	\$52.32
07B	2028090	13352-ZE2-300	1	14311-ZE2-300 Gear, Timing (Use Up To Engine SN 1494214)	\$29.46
08	37074860	14311-ZE2-310	1	14311-ZE2-310 Gear, Timing	\$30.33
09	2028090	14311-ZE2-300	1	14311-ZE2-300 Gear, Timing (Use Up To Engine SN 1494214)	\$29.46
10	10640390	90741-889-810	1	90741-889-810 Key, 7x7x33	\$7.20
11A	06361180	96100-62060-00	1	96100-62060-00 Bearing, Radial Ball (6206)(GX240)	\$24.74
11B	36924150	91001-ZH9-003	1	91001-ZH9-003 Bearing, Radial Ball (6206) (GX270)	\$25.23

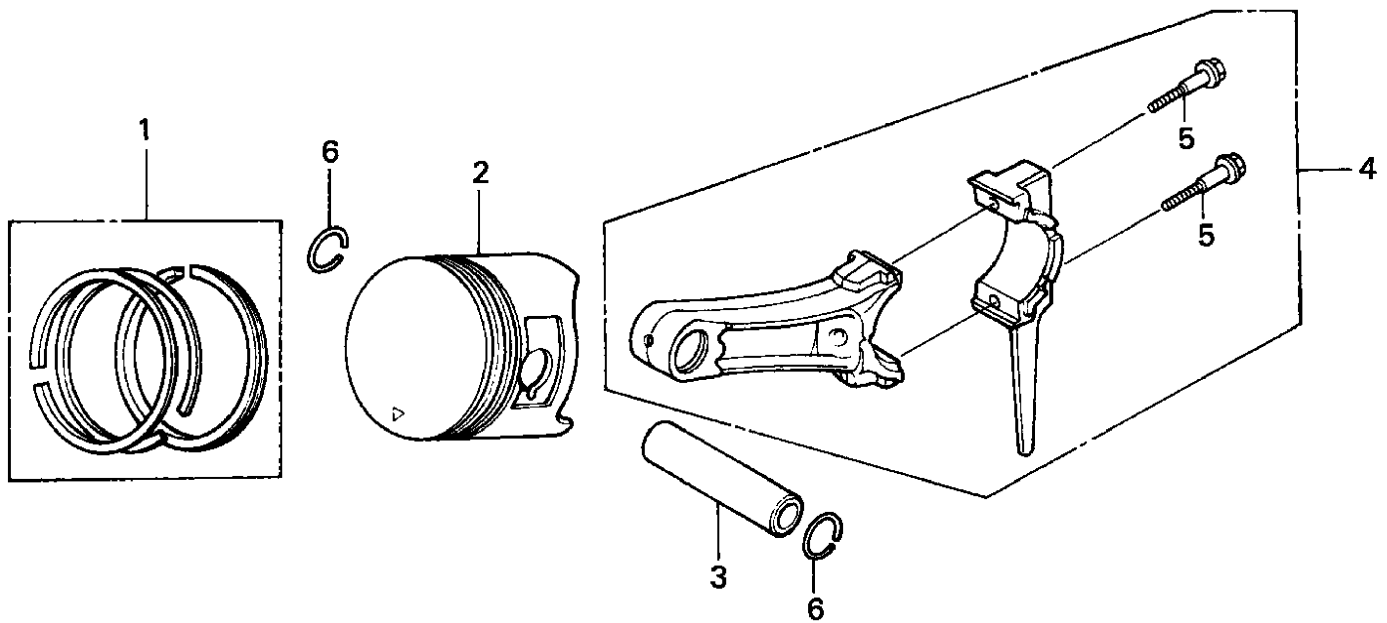
E-MAIL: parts@funpartsexpress.com Internet: <http://www.funpartsexpress.com>

TOLL FREE PHONE ORDERING: 1-800-854-3140

INTERNATIONAL PHONE ORDERING: 1-503-304-8899

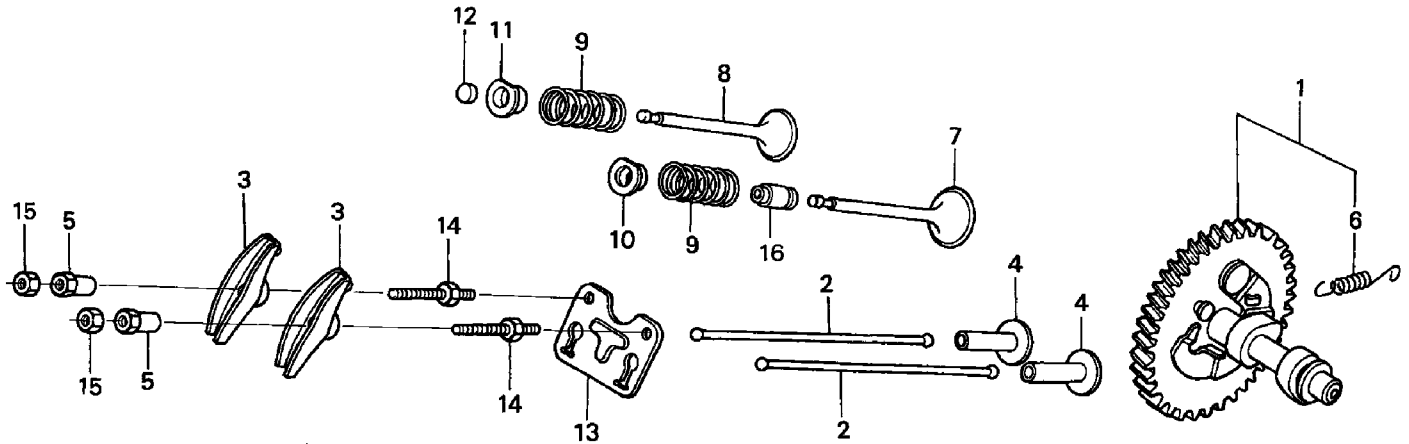
Prices subject to change without notice. **17**

Piston - GX240 & GX270



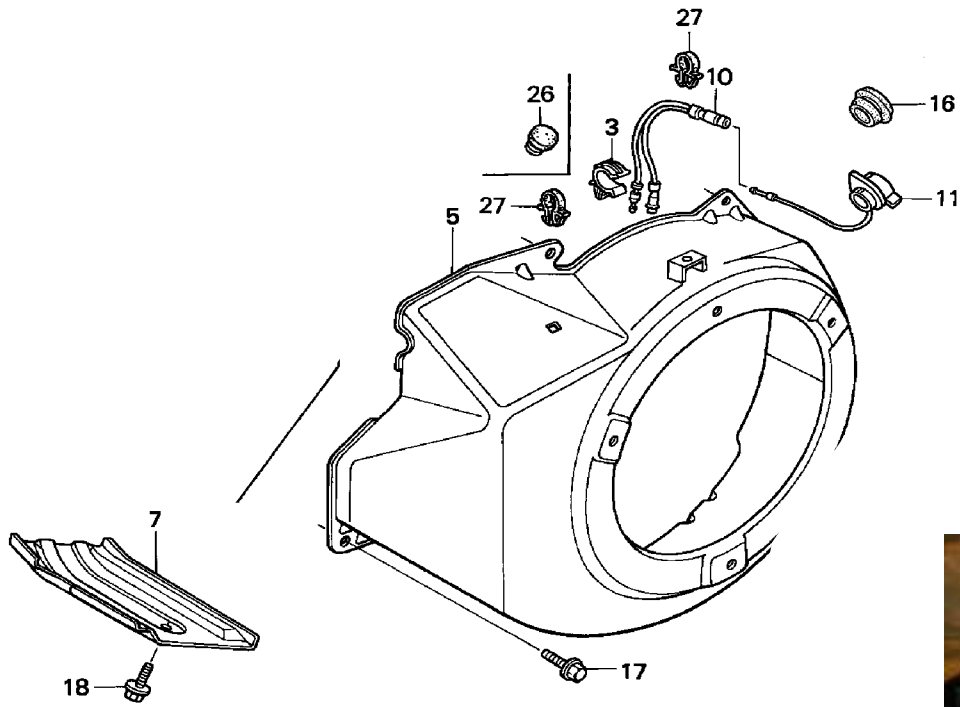
Ref #	FPX #	Honda #	Qty	Description	Price
01A	30234880	13010-ZE2-013	1	13010-ZE2-013 Ring Set, Piston (STD)(GX240)	\$26.98
	30234960	13011-ZE2-013	1	13011-ZE2-013 Ring Set, Piston (.025)(GX240)	\$34.36
	30178940	13012-ZE2-013	1	13012-ZE2-013 Ring Set, Piston (0.50)(GX240)	\$34.74
	30179100	13013-ZE2-013	1	13013-ZE2-013 Ring Set, Piston (0.75)(GX240)	\$34.74
01B	36895850	13010-ZE8-601	1	13010-ZE8-601 Ring Set, Piston (STD)(GX270)S. End:1200783	\$30.36
	36896190	13011-ZE8-601	1	13011-ZE8-601 Ring Set, Piston (0.25)(GX270)S.End:1200783	\$39.64
	36896430	13012-ZE8-601	1	13012-ZE8-601 Ring Set, Piston (0.50)(GX270)S.End:1200783	\$39.05
	36896760	13013-ZE8-601	1	13013-ZE8-601 Ring Set, Piston (0.75)(GX270)S.End:1200783	\$39.21
02A	36785540	13101-ZE2-W00	1	13102-ZE2-W00 Piston (0.25)(GX240)	\$49.01
	36785540	13102-ZE2-W00	1	13102-ZE2-W00 Piston (0.25)(GX240)	\$49.01
	36785620	13103-ZE2-W00	1	13103-ZE2-W00 Piston (0.50)(GX240)	\$53.05
	36785700	13104-ZE2-W00	1	13104-ZE2-W00 Piston (0.75)(GX240)	\$53.05
02B	36896920	13101-ZH9-000	1	13101-ZH9-000 Piston (STD)(GX270) Serial End:1200783	\$65.03
	36897180	13102-ZH9-000	1	13102-ZH9-000 Piston (0.25)(GX270)Serial Start:1200783	\$66.32
	36897340	13103-ZH9-000	1	13103-ZH9-000 Piston (0.50)(GX270) Serial End:1200783	\$60.35
	36897420	13104-ZH9-000	1	13104-ZH9-000 Piston (0.75)(GX270) Serial End:1200783	\$65.35
03	20254840	13111-ZE2-000	1	13111-ZE2-000 Pin, Piston (GX240)	\$10.59
04	6835250	13200-ZE2-010	1	13200-ZE2-010 Rod Assembly, Connective (STD)	\$95.47
	21101530	13200-ZE2-305	1	13200-ZE2-305 Rod Assembly, Connecting (0.25) under	\$94.08
05	21604890	90001-ZE8-000	2	90001-ZE8-000 Bolt, Connecting Rod	\$3.38
06	25391200	90551-ZE1-000	2	90551-ZE1-000 Clip, Piston Pin 18mm	\$1.09

Camshaft - GX240 & GX270



Ref #	FPX #	Honda #	Qty	Description	Price
01	5680970	14100-ZH9-305	1	14100-ZE3-020 Camshaft Assy. GX270	\$147.40
02	33371690	14410-ZE2-013	2	14410-ZE2-013 Rod, Push	\$7.20
03	62062540	14431-ZE2-010	2	14431-ZE2-010 Arm, Valve Rocker	\$7.27
04	20256090	14441-ZE2-000	2	14441-ZE2-000 Lifter, Valve	\$11.90
05	43009010	14451-ZE1-013	2	14451-ZE1-013 Pivot, Rocker Arm	\$5.48
06	14269070	14568-ZE1-000	1	14568-ZE1-000 Spring, Weight Return	\$2.58
07	20256170	14711-ZE2-000	1	14711-ZE2-000 Valve, Intake	\$14.59
08	20256250	14721-ZE2-000	1	14721-ZE2-000 Valve, Exhaust	\$28.11
09	20256330	14751-ZE2-003	2	14751-ZE2-003 Spring, Valve	\$3.97
10	20256410	14771-ZE2-000	1	14771-ZE2-000 Retainer, Intake Valve Spring	\$7.45
11	20256580	14773-ZE2-000	1	14773-ZE2-000 Retainer, Exhaust Valve Spring	\$7.58
12	20256660	14781-ZE2-000	1	14781-ZE2-000 Rotator, Valve	\$4.45
13	37074940	14791-ZE2-010	1	14791-ZE2-010 Plate, Push Rod Guide	\$3.09
14	17569641	90012-ZE0-010	2	90012-ZE0-010 Bolt, Pivot	\$6.45
15	14312870	90206-ZE1-000	2	90206-ZE1-000 Nut, Pivot Adjusting	\$3.28
**	2089571	12209-ZE8-003	1	12209-ZE8-003 Seal, Valve Stem	\$6.34

Fan Cover - GX240 & GX270

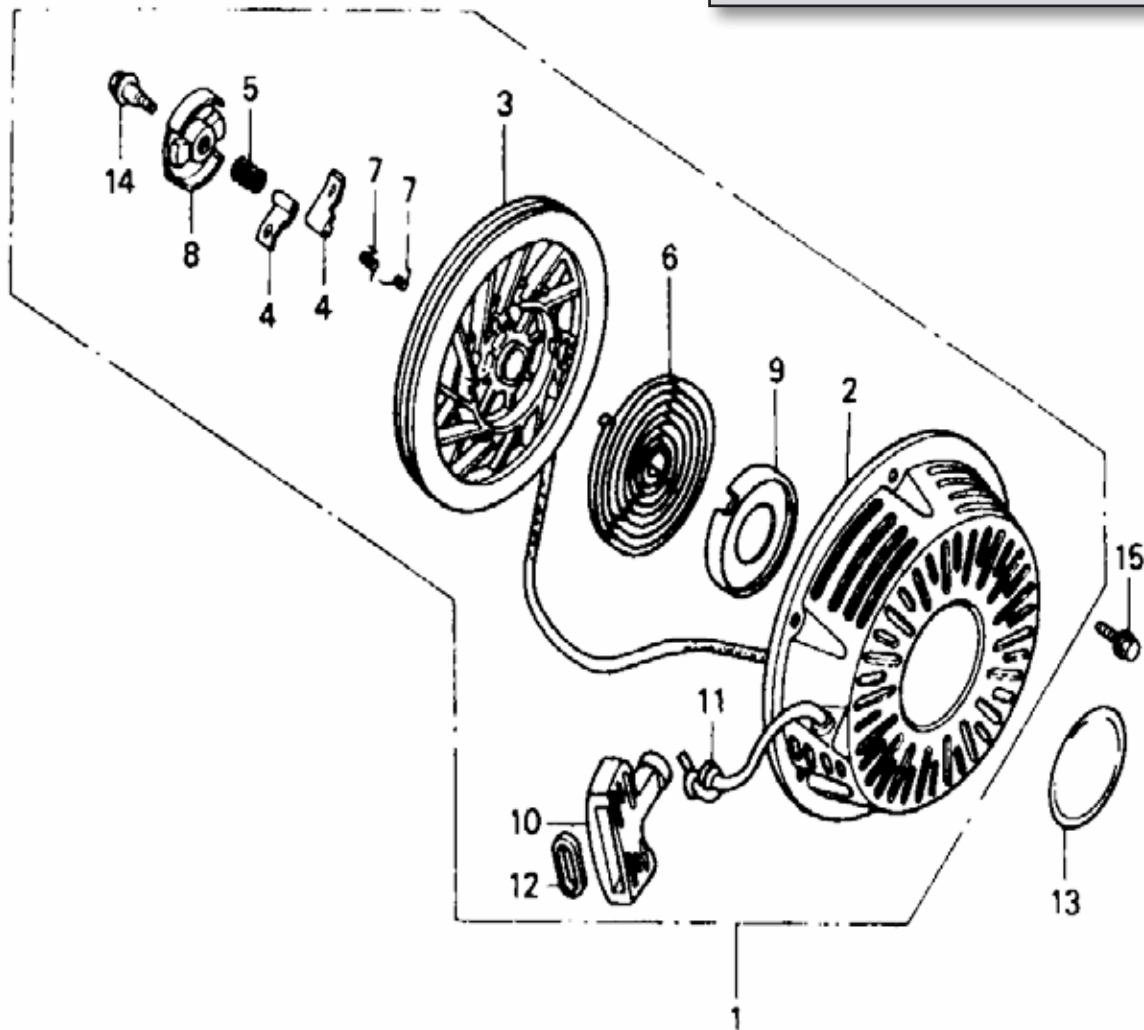


BRACKET, 90 DEG. KILL SWITCH
(MOUNTS TO BACK OF ENGINE)

Ref #	FPX #	Honda #	Qty	Description	Price
03	20260940	16732-ZE2-003	1	16732-ZE2-003 Clip, Tube	\$1.64
05	7323561	19610-ZE2-010ZA	1	19610-ZE2-010ZL Cover Comp, Fan 8 or 9hp	\$69.52
07	40249490	19631-ZE2-D00	1	19631-ZE2-D00 Shroud	\$12.07
10	41930820	32197-ZH8-003	1	32197-ZH8-003 Sub Harness	\$8.18
11	27878690	36100-ZE1-015	1	36100-ZE1-015 Switch Assembly, Engine Stop	\$16.28
16	06777730	81329-567-020	1	81329-567-020 Grommet, Drain Hole	\$4.23
17	06368450	90013-883-000	9	90013-883-000 Bolt, Flange 6x12	\$1.58

Starter - GX240 & GX270

Before ordering, Please check our website
for current promotions.
www.FunPartsXpress.com



Ref #	FPX #	Honda #	Qty	Description	Price
01	9307398	28400-ZE2-W01ZA	1	28400-ZE2-W02ZN Starter Assembly, Recoil 8 or 9hp (New)	\$71.90
02	7324072	28410-ZE2-W01ZA	1	28410-ZE2-W01ZN Case Complete, Recoil Start	\$60.86
03	36788690	28421-ZE2-W01	1	28421-ZE2-W01 Pulley, Recoil Starter	\$30.80
04	36788770	28422-ZE2-W01	2	28422-ZE2-W01 Ratchet, Starter	\$6.09
05	36788850	28441-ZE2-W01	1	28441-ZE2-W01 Spring, Friction	\$4.55
06	36788930	28442-ZE2-W01	1	28442-ZE2-W01 Spring, Starter Return	\$19.06
07	36789010	28443-ZE2-W01	2	28443-ZE2-W01 Spring, Ratchet	\$3.99
08	36789190	28444-ZE2-W01	1	28444-ZE2-W01 Retainer, Spring	\$10.95
09	36789270	28445-ZE2-W01	1	28445-ZE2-W01 Holder, Spring	\$14.81
10	9359142	28461-ZE2-W02	1	28461-ZE2-W03 Grip, Starter	\$8.08
11	52688180		1	Rope, Starter 200' Roll #5.5(Go Karts Only)08	\$26.27
12	36789760	28469-ZE2-W01	1	28469-ZE2-W01 Grip, Reinforcement	\$5.11
13A	6955710	87521-ZE2-W10	1	87521-ZE2-W02 Emblem, (External) (GX240)	\$6.56
13B	7350358		1	87521-ZH9-030 Emblem (External) (GX270)	\$6.45
14	36790240	90004-ZE2-W01	1	90004-ZE2-W01 Screw, Center	\$3.04
15	17957230	90011-ZG0-000	3	90011-ZG0-000 Bolt, Flange, 6x8	\$1.44

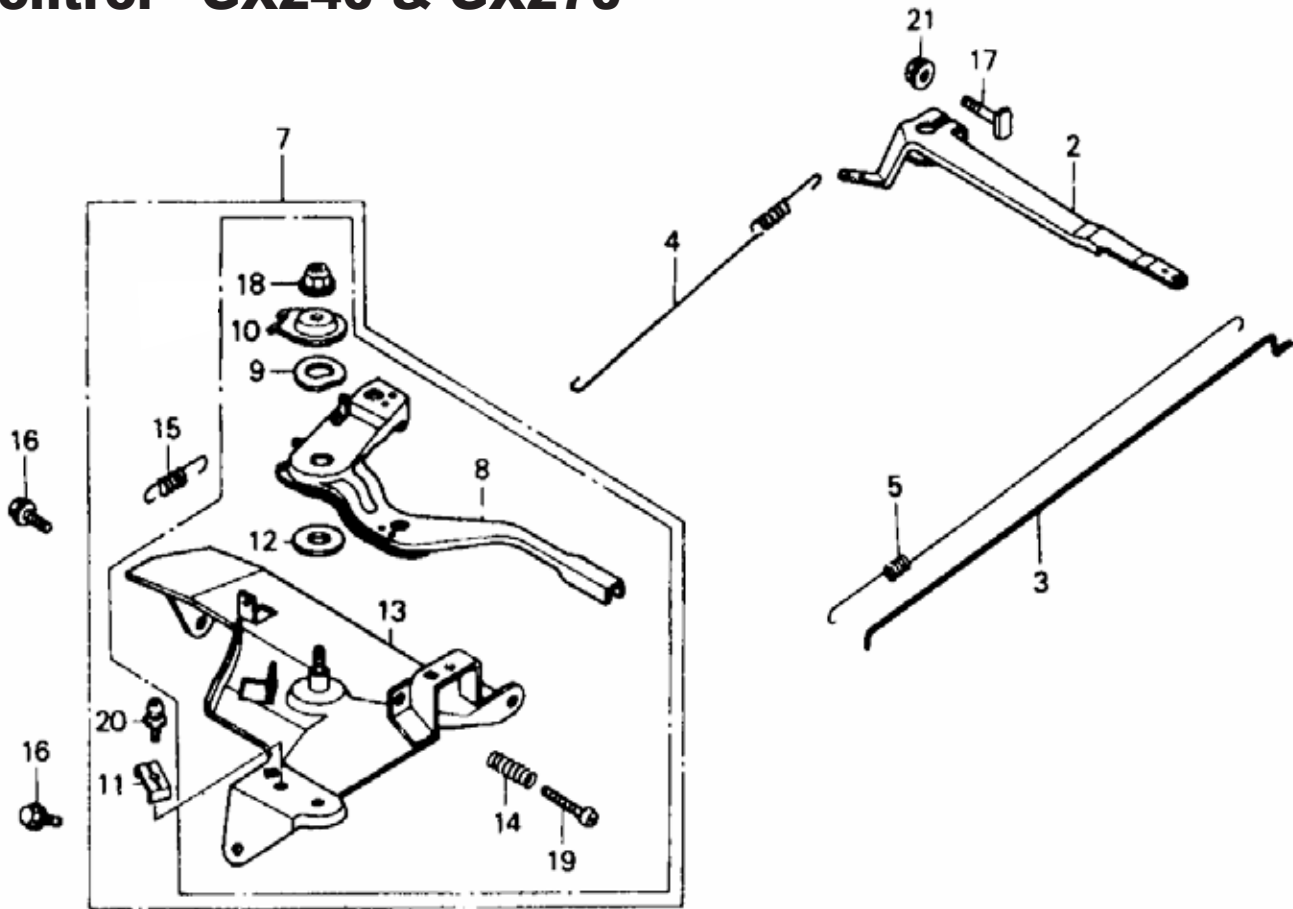
E-MAIL: parts@funpartsexpress.com Internet: <http://www.funpartsexpress.com>

TOLL FREE PHONE ORDERING: 1-800-854-3140

INTERNATIONAL PHONE ORDERING: 1-503-304-8899

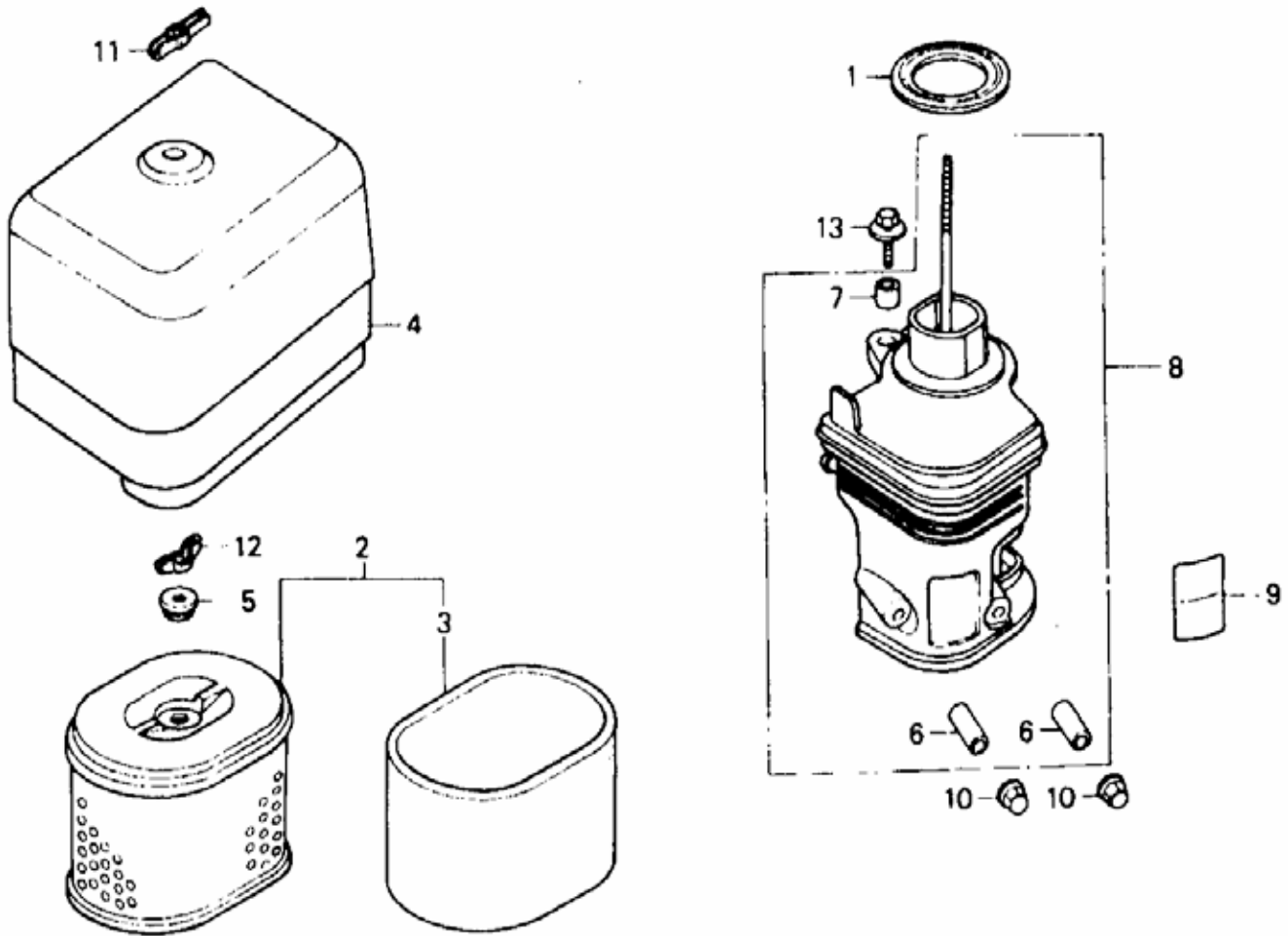
Prices subject to change without notice. **21**

Control - GX240 & GX270



Ref #	FPX #	Honda #	Qty	Description	Price
02	20260030	16551-ZE2-000	1	16551-ZE2-000 Arm, Governor	\$14.08
03	20260110	16555-ZE2-000	1	16555-ZE2-000 Rod, Governor	\$3.77
04	20260290	16561-ZE2-000	1	16561-ZE2-000 Spring, Governor	\$4.38
05	20260370	16562-ZE2-000	1	16562-ZE2-000 Spring, Throttle Return	\$3.77
07	36786530	16570-ZE2-W20	1	16570-ZE2-W20 Control Assembly, (Remote)	\$38.30
08	36786610	16571-ZE2-W00	1	16571-ZE2-W00 Lever, Control	\$10.74
**	36786610MOD		1	Lever, Custom GX240 & GX270 Throttle	\$14.47
09	14273840	16574-ZE1-000	1	16574-ZE1-000 Spring, Lever	\$3.04
10	36786790	16575-ZE2-W00	1	16575-ZE2-W00 Washer, Control Lever	\$4.16
11	08004660	16576-891-000	1	16576-891-000 Holder, Cable	\$3.56
12	14274000	16578-ZE1-000	1	16578-ZE1-000 Spacer, Control Lever	\$4.07
13	36786870	16581-ZE2-W00	1	16581-ZE2-W00 Base Comp., Control	\$15.14
14	06364310	16584-883-300	1	16584-883-300 Spring, Control Adjusting	\$3.77
15	07432030	16592-883-310	1	16592-883-310 Spring, Cable Return	\$2.58
16A	06368450	90013-883-000	2	90013-883-000 Bolt, Flange 6x12	\$1.58
16B	25813530	95701-06008-00	2	95701-06008-00 Bolt, Flange 6x8	\$2.08
17	24186710	90015-ZE5-010	1	90015-ZE5-010 Bolt, Governor Arm	\$2.41
18	14101820	90114-SA0-000	1	90114-SA0-000 Nut, Self Locking 6mm	\$3.43
19	01718190	93500-05028-0A	1	93500-05028-0A Screw, Pan 5x28	\$0.68
20	08215120	93893-05016-00	1	93893-05016-00 Screw-Washer, 5x16	\$0.82
**	01455570	93500-05016-0A	1	93500-05016-0A Screw, Pan 5x16	\$0.61
21	04716230	94050-06000	1	94050-06000 Nut, Flange 6mm	\$0.90

Air Filter - GX240 & GX270



Ref #	FPX #	Honda #	Qty	Description	Price
01	7301195	16271-ZE2-010	1	16271-ZE2-010 Packing, Elbow	\$2.21
02	7460967	17210-ZE2-515	1	17210-ZE2-515 Element, Air Cleaner (W/Pre Filter) 8 or 9hp	\$17.58
02A	SP-2748		1	Filter, Air GX240, 270 K&N	\$39.98
03	51963080	17218-ZE2-505	1	17218-ZE2-505 Filter, Outer	\$12.63
04	36900540	17231-ZH9-820	1	17231-ZH9-820 Cover, Air Cleaner 8 or 9hp	\$40.43
05	09997630	17232-891-000	1	17232-891-000 Grommet, Air Cleaner	\$4.75
06	23841050	17238-ZE2-310	2	17238-ZE2-310 Collar, Air Cleaner	\$3.53
07	14275330	17239-ZE1-000	1	17239-ZE1-000 Collar B, Air Cleaner	\$3.43
08	24142900	17410-ZE2-020	1	17410-ZE2-020 Elbow Comp., Air Cleaner 8 or 9hp	\$39.23
09	20269790	87528-ZE2-810	1	87528-ZE2-810 Mark, Choke (External)	\$2.04
10	04716230	94050-06000	2	94050-06000 Nut, Flange 6mm	\$0.90
11	09948550	90203-PB2-000	1	90203-PB2-000 Nut, Air Cleaner Cover	\$4.95
12	01277200	90325-044-000	1	90325-044-000 Nut, Tool Box Setting	\$2.89
13	24106940	93404-062020-08	1	93404-062020-08 Bolt & Washer 6x20	\$0.86
FOAM ONLY KIT					
**	22852030	17420-ZE2-000	1	17420-ZE2-000 Cap, Air Cleaner	\$9.49
**	22850210	17231-ZE2-810	1	17231-ZE2-810 Cover, Air Cleaner	\$19.31
**	22850960	17403-ZE2-810	1	17403-ZE2-810 Element, Air Cleaner (Foam)	\$7.79
**	22849820	17212-ZE2-810	1	17212-ZE2-810 Grid, Air Cleaner	\$4.82
INTAKE SILENCER KIT					
**	23038650	17235-ZE2-820	1	17235-ZE2-820 Noise, Silencer	\$16.41

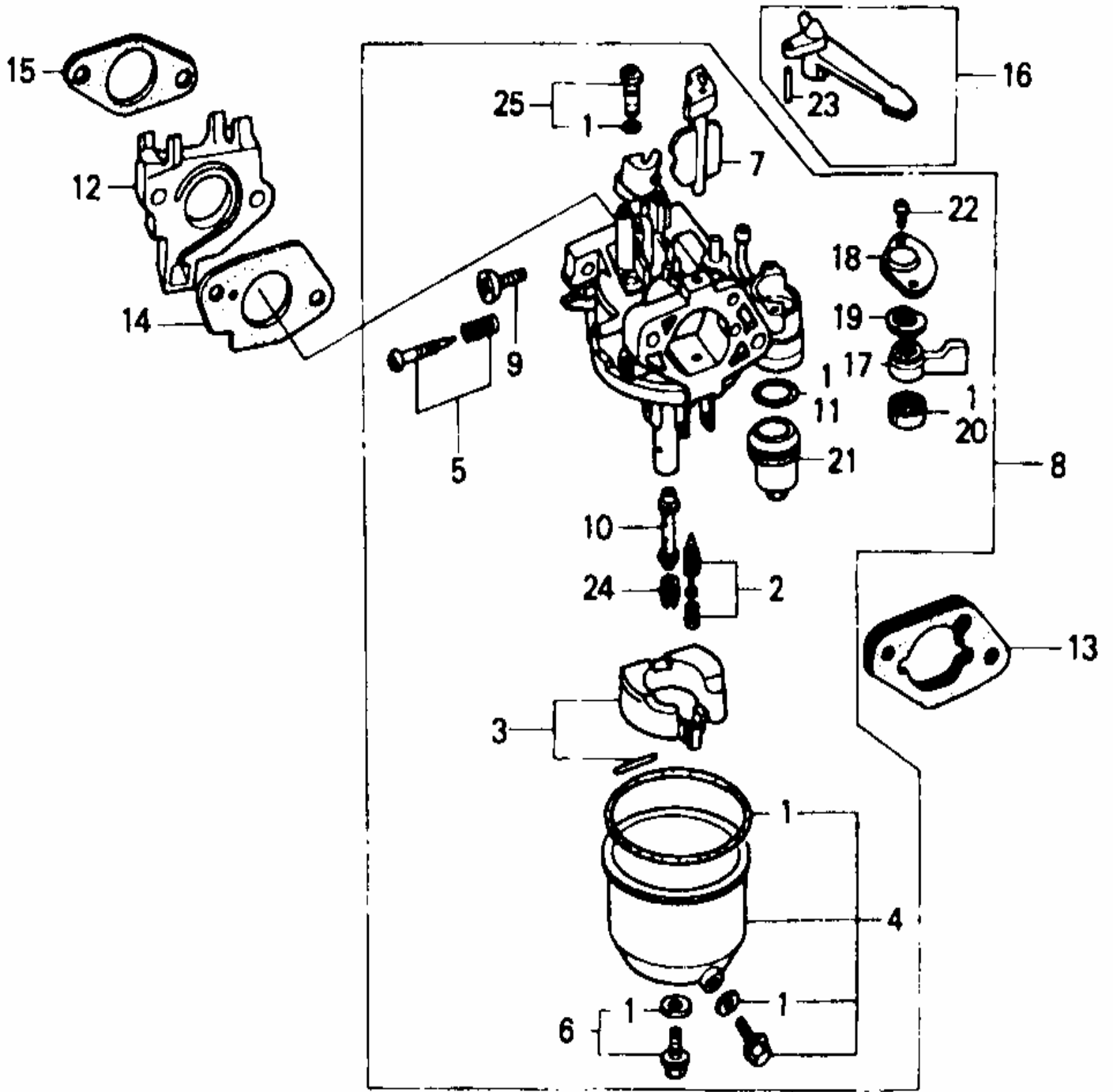
E-MAIL: parts@funpartsxpress.com Internet: <http://www.funpartsxpress.com>

TOLL FREE PHONE ORDERING: 1-800-854-3140

INTERNATIONAL PHONE ORDERING: 1-503-304-8899

Prices subject to change without notice. **23**

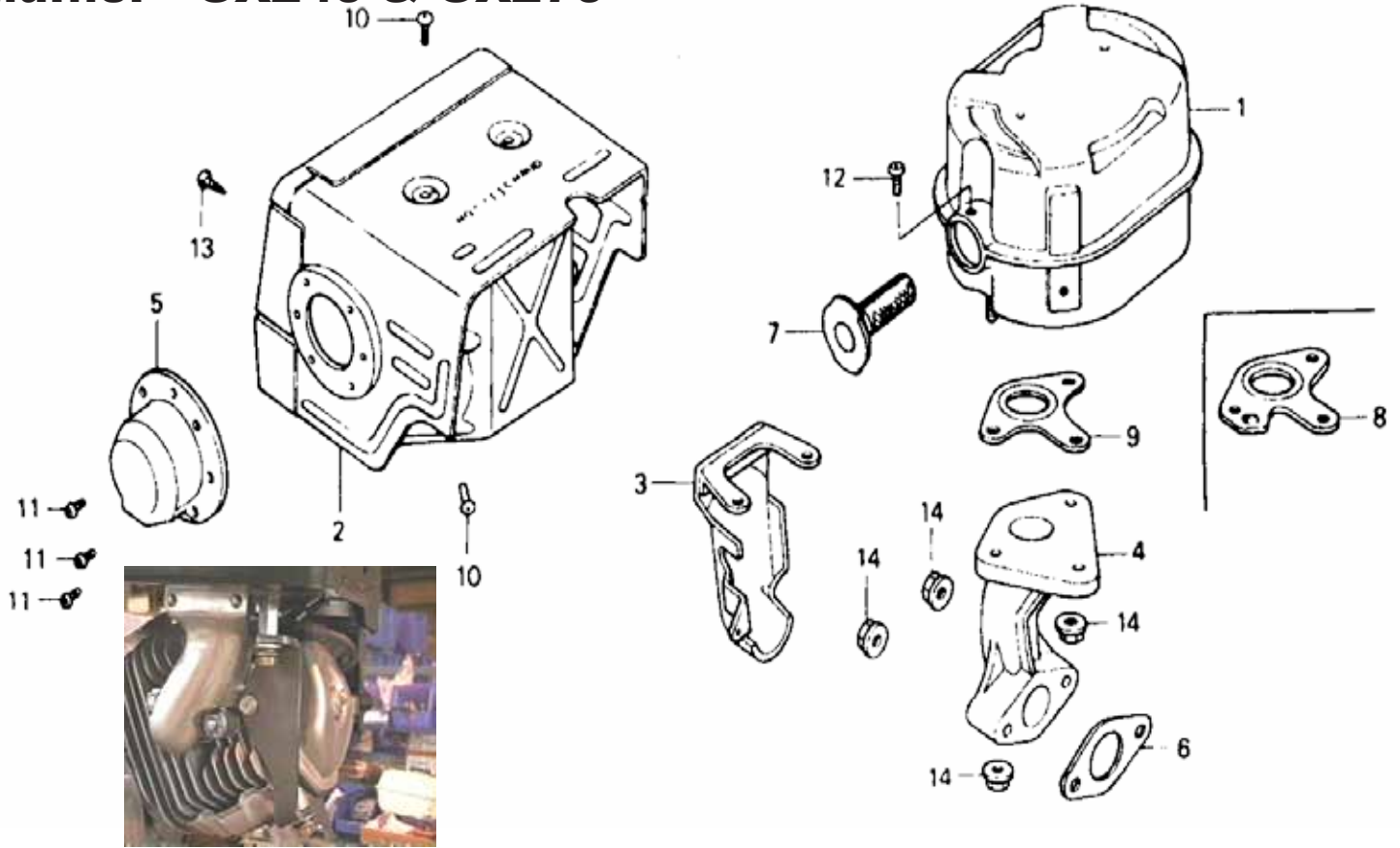
Carburetor - GX240 & GX270



Carburetor - GX240 & GX270

Ref #	FPX #	Honda #	Qty	Description	Price
01A	35113830	16010-ZE2-812	1	16010-ZE2-812 Gasket Set (GX240)	\$16.92
01B	35211760	16010-ZE2-015	1	16010-ZE2-015 Gasket Set (GX270)	\$14.97
02	20592360	16011-ZA0-931	1	16011-ZA0-931 Valve Set, Float GX240/270	\$33.95
03	20592440	16013-ZA0-931	1	16013-ZA0-931 Float Set GX240/270	\$38.23
04	20899930	16015-ZE8-005	1	16015-ZE8-005 Chamber Set, Float	\$33.64
05A	14415000	16016-ZE0-005	1	16016-ZE0-005 Screw Set, Pilot	\$11.54
05B	20900090	16016-ZA0-931	1	16016-ZA0-931 Screw Set, Pilot (GX270)	\$11.54
06	14415180	16028-ZE0-005	1	16028-ZE0-005 SUP/8866253 Screw Set	\$9.51
07	20900170	16044-ZE0-005	1	16044-ZE2-005 Choke Set GX270 & GX240	\$27.21
08A	7855380	16100-ZE2-WE2	1	16100-ZE2-W32 Carburetor Assy (BE15GA) GX240 (stamp:BE70)	\$76.36
08B	78390120	16100-ZH9-822	1	16100-ZH9-822 Carburetor Assembly (BE21A) GX270 (Stamp:BE75)	\$76.36
10A	14415590	16124-ZE0-005	1	16124-ZE0-005 Screw, Throttle Stop	\$12.03
10A	21575430	16166-ZE2-015	1	16166-ZE2-015 Nozzle, Main (GX240)	\$24.83
10B	36899730	16166-ZH9-820	1	16166-ZH9-820 Nozzle, Main (GX270)	\$20.68
11	00056520	16173-001-004	1	16173-001-004 Packing, Fuel Strainer Cup	\$5.59
12	20259060	16211-ZE2-000	1	16211-ZE2-000 Insulator, Carburetor	\$12.31
13	26865330	16220-ZA0-702	1	16220-ZA0-702 Spacer Complete, Carburetor	\$10.64
14	36786200	16221-ZA0-800	1	16221-ZA0-800 Gasket, Carburetor Mounting	\$2.28
15	36786380	16223-ZA0-800	1	16223-ZA0-800 Gasket, Insulator Mounting	\$1.93
16	14401140	16610-ZE1-000	1	16610-ZE1-000 Lever Comp., Choke (Std)	\$8.17
17	51673580	16953-ZE1-406	1	16953-ZE1-406 Lever, Valve	\$9.41
18	51481350	16954-ZE1-812	1	16954-ZE1-812 Lever, Valve	\$2.57
19	18078090	16956-ZE1-811	1	16956-ZE1-811 Spring, Cock Lever	\$2.90
20	34407080	16957-ZE1-812	1	16957-ZE1-812 Packing, Fuel Cock	\$3.14
21	14415830	16967-ZE0-811	1	16967-ZE0-811 Cup, Fuel Strainer	\$17.76
22	04205050	93500-03008-0G	1	93500-03008-0G Screw, Pan 3x8	\$0.61
23	14415910	94305-03008-0G	2	94305-20122 Pin, Spring 2x12	\$2.32
24A	36790400	99101-ZF5-0800	1	99101-ZF5-0800 Jet, Main, #80 (GX240)	\$8.02
24B	5947130	99101-ZF5-0800	1	99101-ZH8-0820 Jet, Main, #82 (GX240 & GX270)	\$8.02
24C	5947148	99101-ZF5-0850	1	99101-ZH8-0850 Jet, Main, #85 (GX240)	\$7.47
24D	5945555	99101-ZF5-0880	1	99101-ZH8-0880 Jet, Main #88 (GX270)	\$7.47
25A	21598200	99204-ZE2-0380	1	99204-ZE2-0380 Jet Set, Pilot, #38 (GX240)	\$17.43
25B	36831410	99204-ZE2-0400	1	99204-ZE2-0400 Jet Set, Pilot #40 (GX270)	\$17.70

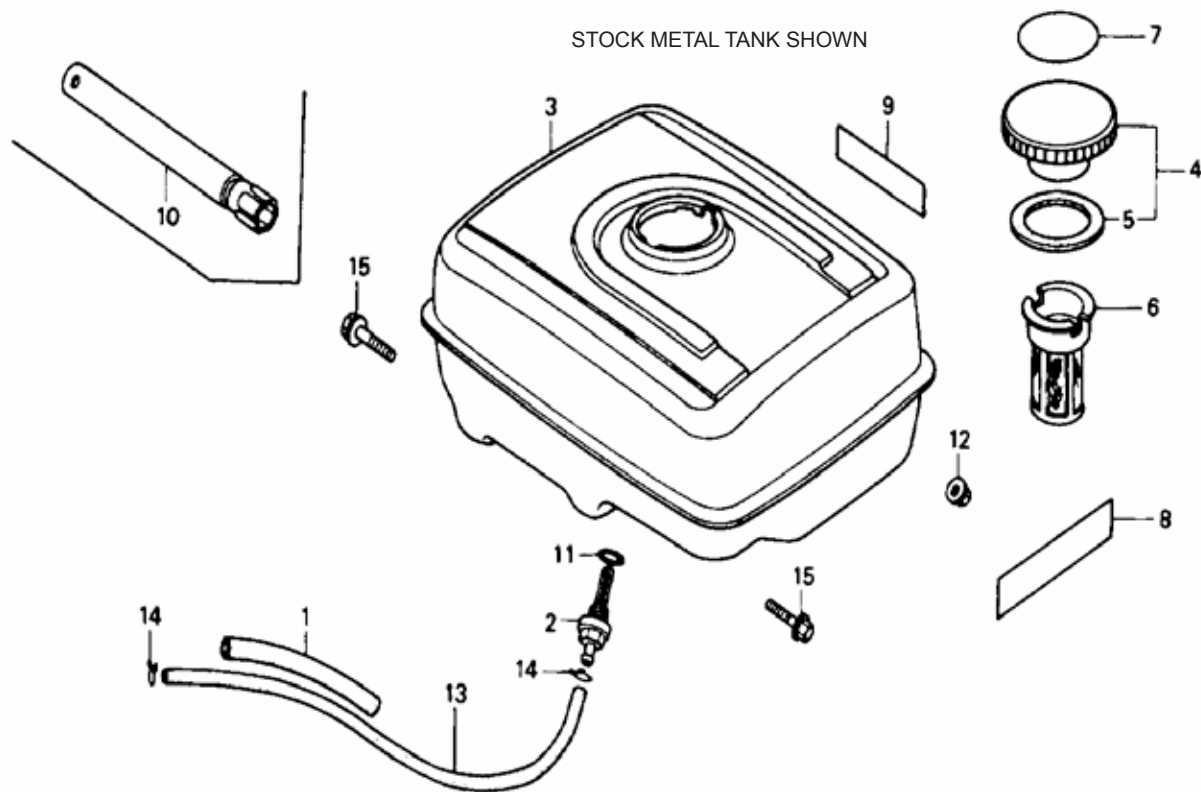
Muffler - GX240 & GX270



Muffler Support Bracket 8/9hp (Standard & Silent)

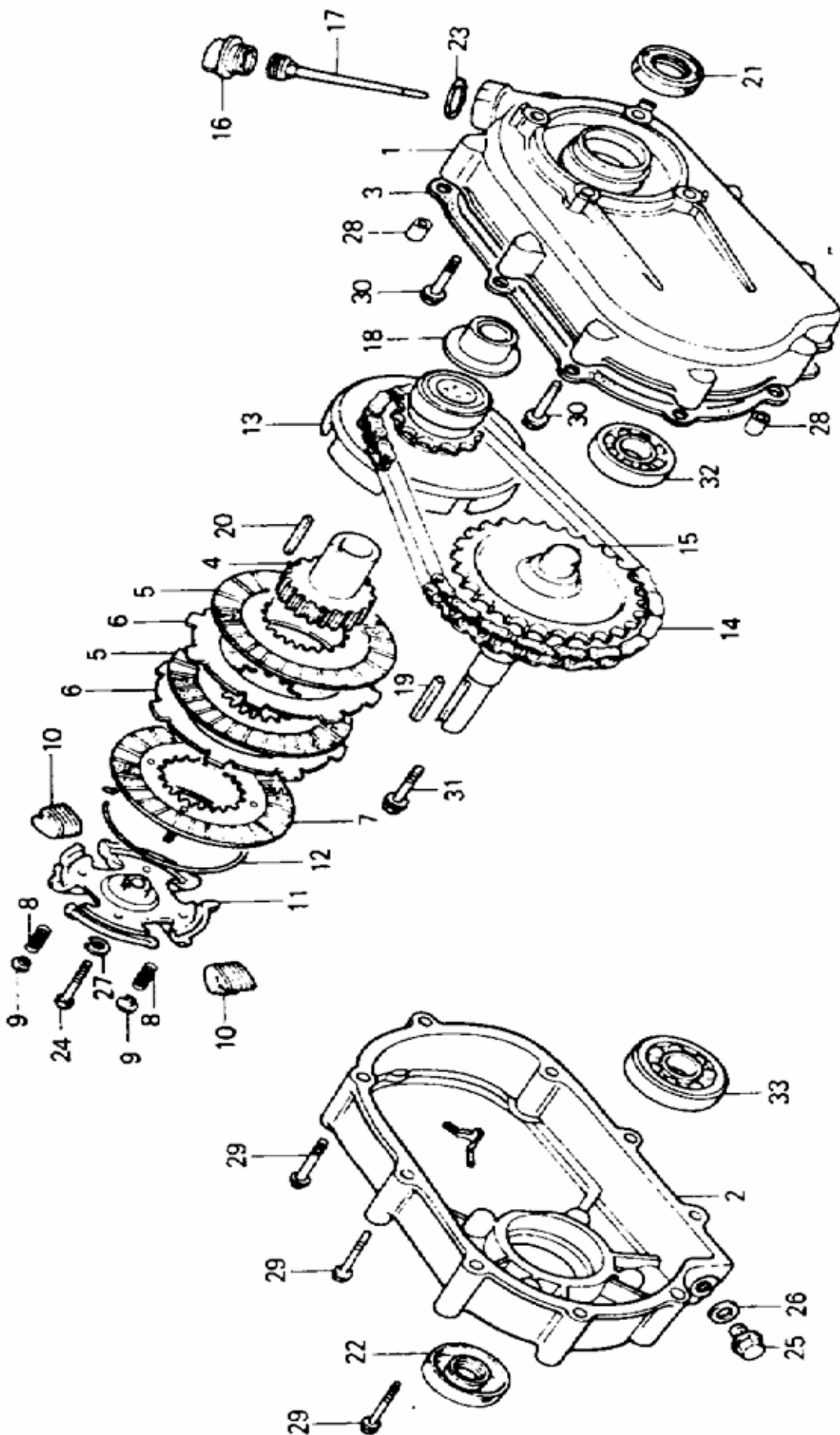
Ref #	FPX #	Honda #	Qty	Description	Price
01	36787450	18310-ZE2-W00	1	18310-ZE2-W00 Muffler Bare. GX240/270 Std.)	\$79.61
**	61453530	18310-ZE2-W61	1	18310-ZE2-W61 Muffler, Comp. Silent (100db)(GX240/GX270)	\$97.36
02	46136420	18320-ZE2-W01	1	18320-ZE2-W01 Protector, Muffler (GX240/270 Std.)	\$77.34
**	46840980	18320-ZE2-W61	1	18320-ZE2-W61 Protector, Muffler (GX240/GX270 Silent)	\$71.99
03	36787860	18323-ZE2-W00	1	18323-ZE2-W00 Protector, Exhaust Pipe	\$19.08
04	36787940	18330-ZE2-W00	1	18330-ZE2-W00 Pipe, Exhaust	\$52.08
**	36820360	18330-ZH9-N00	1	18330-ZH9-N00 Pipe, Exhaust (Silent)	\$66.91
05	20262270	18331-ZE2-810	1	18331-ZE2-810 Cap, Muffler	\$6.82
06	51641990	18333-ZK6-Y00	1	18333-ZK6-Y00 Gasket, Ex. Pipe	\$3.79
07	24825940	18355-ZE2-010	1	18355-ZE2-010 Arrestor, Spark	\$19.38
08	36788020	18381-ZE2-W10	1	18381-ZE2-W10 Gasket, Muffler (Arrestor)	\$15.08
09	36788100	18381-ZE2-800	1	18381-ZE2-800 Gasket, Muffler Serial Start:1213262	\$11.36
10	14311050	90050-ZE1-000	4	90050-ZE1-000 Screw, Tapping 5x8	\$1.56
11	14311210	99055-ZE1-000	3	99055-ZE1-000 Screw, Tapping 4x6	\$0.91
12	14311210	99055-ZE1-000	1	99055-ZE1-000 Screw, Tapping 4x6	\$0.91
13	36790320	93901-360J0	1	93901-360J0 Screw, Tapping 6x10	\$2.36
14	04811430	94050-08000	5	94050-08000 Nut, Flange 8mm	\$0.90
**	00966		2	Washer, 1/4 Z Flat (33004)	\$0.20
**	00933		2	Washer, 3/8 Z Lock	\$0.13
**	0097114		2	Bolt, 8 x 20mm G5Z Hex (3/4")	\$0.59
**	0097113		1	Nut, 8mm Coupler	\$1.36
**	36787530		1	Stay, Muffler 8 - 9 HP Silent (Bracket) Silver	\$11.33
**	36787530KIT		1	Stay, Kit 8 - 9 HP Muffler (Silent)	\$12.86
**	36787540		1	Stay, Muffler 8 - 9 HP Standard (Bracket) Gold	\$10.66
**	36787540KIT		1	Stay, Kit 8 - 9 HP Muffler (Standard)	\$11.78

Fuel Tanks - GX240 & GX270



Ref #	FPX #	Honda #	Qty	Description	Price
01	14366740	16854-ZE1-000	1	16854-ZE1-000 Rubber, Supporter (GX140)	\$2.61
**	36836460	16854-ZH8-000	1	16854-ZH8-000 Rubber, Supporter (GX160)	\$3.75
02	14274590	16955-ZE1-000	1	16955-ZE1-000 Joint, Fuel Tank	\$9.47 <small>Limited</small>
03	36900700	17510-ZE2-010ZA	1	17510-ZE2-010ZA Tank, Fuel *NH31* (8HP \$ 9HP)	\$99.57
04	53448170	17620-ZH7-023	1	17620-ZH7-023 Cap, Fuel Filler	\$14.31
05	28205870	17631-329-003	1	17631-329-003 Packing, Fuel Filler Cap	\$2.83
06A	04747590	17672-880-000	1	17672-880-000 Fuel, Filter	\$10.21
06B	42708640	17672-ZE2-W01	1	17672-ZE2-W01 Filter, Fuel (GX160)	\$10.42
07	14310140	87522-ZE1-810	1	87522-ZE1-810 Mark, Caution (External)	\$2.19
08	7005820	87522-ZH9-000	1	87522-ZH9-010 Label, Caution	\$3.53
09	41933550	87532-ZH8-810	1	87532-ZH8-810 Mark, Oil Alert (External)	\$3.92
10	14310480	89218-ZE1-000	1	89218-ZE1-000 Wrench, Spark Plug	\$1.10
11	09498830	91353-671-003	1	91353-671-003 O-Ring, 14mm	\$2.11
12	04811430	94050-08000	2	94050-08000 Nut, Flange 8mm	\$0.90
13	H-173		1FT.	Hose, Fuel Line 3/16" (Go-Kart & Bumper Boats)	\$0.15
14	02506470	95002-02080	2	95002-02080 Clip BB, Tube	\$0.86
15	25453250	95701-08025-00	2	95701-08025-00 Bolt, Flange 8x25	\$1.05
**	010802		1	Tank, Fuel Bare 3.3 Gal. "Clear" (8 or 9HP Motor)	\$99.86
**	010802		1	Tank, Fuel Bare 3.3 Gal. "Clear" (8 or 9HP Motor)	\$99.86
**	1-60-A0180		1	Cap, Fuel FPX Anti-Spill Tip Over Cap	\$16.78
**	A010802		1	Tank, Fuel Assy 3.3 Gal. Clear (8 or 9HP Motor) (Non-Prod)	\$112.19
**	00868		4	Bolt, 1/4-20 x 1-1/4 B5-Z	\$0.18
**	00968		4	Washer, 1/4 Z Lock	\$0.17
**	00966		4	Washer, 1/4 Z Flat (33004)	\$0.20

1:2 Reduction - GX240 & GX270



1:2 Reduction - GX240 & GX270

Ref #	FPX #	Honda #	Qty	Description	Price
01	07606860	21510-889-750	1	21510-889-750 Case, Reduction	\$157.18
02	07607100	21610-889-750	1	21610-889-750 Cover, Reduction	\$237.10
03	43499650	21691-889-306	1	21691-889-306 Gasket, Reduction Cover (GX240/270)	\$8.42
04	07607360	22121-889-750	1	22121-889-750 Center, Clutch (GX240 & GX270)	\$69.73
05	43699550	22201-822-306	2	22201-822-306 Disk, Clutch Friction	\$28.96
06	03970340	22311-822-610	2	22311-822-610 Plate, Clutch 1.6mm	\$16.55
07	03970420	22350-822-610	1	22350-822-610 Plate Comp., Clutch Pressure	\$22.47
08	03970590	22411-822-611	4	22411-822-611 Spring, Clutch Free	\$3.04
09	03970670	22421-822-610	4	22421-822-610 Holder, Clutch Spring	\$1.41
10	03970750	22521-822-610	48	22521-822-610 Weight, Clutch	\$3.19
11	07607440	22531-889-750	1	22531-889-750 Holder, Clutch Weight	\$63.04
12	03970910	22535-822-610	1	22535-822-610 Weight, Center Clutch	\$2.01
13	07607510	23120-889-750	1	23120-889-750 Sprocket Comp. Drive (14T) (GX240 & GX270)	\$101.27
14	41955660	23161-822-611	1	23161-822-611 Chain, Drive (RK428SH-36LE)	\$48.34
15	03971250	23711-822-610	1	23711-822-610 Shaft Comp., P.T.O. (28T)	\$148.58
16	7556608	25620-823-000	1	25620-805-612 Cap, Reduction Oil	\$6.34
17	07607770	25651-889-750	1	25651-889-750 Gauge, Oil Level	\$8.91
18	07612210	90403-889-000	1	90403-889-000 Washer, Thrust 25mm	\$13.72
19	10640390	90741-889-810	1	90741-889-810 Key, 7x7x33	\$7.20
20	07612390	90741-889-000	1	90741-889-000 Key, Clutch Center	\$8.27
21	07564940	91201-890-003	1	91201-890-003 Oil Seal, 30x46x8	\$8.94
22	8566788	91202-805-610	1	91202-Z2F-801 Oil Seal (30X50X7) Serial Start:1121567	\$11.30
**	10006		1	Seal, GX Output Sft High Heat Viton (Replmt for 00651360)	\$8.65
23	00651850	91301-805-000	1	91301-805-000 O-Ring 26x2.7	\$3.84
24	43356420	92100-08035-0H	1	92101-08035-0H Bolt Hex 8x35	\$1.05
25	00539750	92800-12000	1	92800-12000 Bolt, Drain Plug 12mm	\$2.32
25A	1-61-0039		1	NLA/Drain Plug Bolt Magnetic 12mm	\$16.31
26	01718680	94109-12000	1	94109-12000 Washer, Drain Plug 12mm	\$0.65
27	02603310	94111-08800	1	94111-08800 Washer, Spring 8mm	\$0.59
28	04980550	90702-881-000	2	90702-881-000 Pin, Dowel 8x10 (GX140)	\$2.28
29	26474100	95701-06050-08	9	95701-06050-08 Bolt, Flange, 6X50	\$1.34
30	26022410	95701-08032-08	4	95701-08032-08 Bolt Flange 8x32	\$1.36
31	25453250	95701-08025-00	1	95701-08025-00 Bolt, Flange 8x25	\$1.05
32	03680760	96100-62050-10	1	96100-62050-10 Bearing, Radial Ball (6205) (GX140)	\$19.59
33	06361180	96100-62060-00	1	96100-62060-00 Bearing, Radial Ball (6206)(GX240)	\$24.74



FPX Exclusive Heavy Duty Go-Kart Clutch Plates!

Do your go-karts seem to have a lack of acceleration? Are your original clutches getting worn out? Then don't hesitate, order your replacement clutch parts today and get those go-karts up to speed and functioning properly.

You've got two choices of clutches to choose from for your Honda® powered go-karts. The original OEM clutch or the FPX Heavy Duty replacement clutch. Save \$\$\$ with our FPX clutch and get the same or better performance!

Advantages of new FPX clutch plates

1. NEW Steel "slip style" plate now is identical to Honda® which will extends the life of your clutch.
2. Fits all Honda® Engines with 2 to 1 clutches.
3. Same thickness just more clutch plate material on friction plate & pressure plate.
4. Exclusive to Fun Parts Xpress.
5. Cost 53% to 55% less than OEM MSRP.



GX240 to 270 Rebuild Kit **GX160 & 200 Rebuild Kit**

FPX CLUTCH PLATES
Pressure Plate—Fiber Plate—Steel Plate

1-00-K0001

\$90.64

1-00-K0002

\$86.02

FPX #	Description	Price
FPX Exclusive Clutch Plates		
43699550HD	Plate, Clutch Friction Disc HD	\$13.55
03970340HD	Plate, Clutch Metal HD 1.5mm Smooth Typ	\$8.10
03970420HD	Plate, Clutch Pressure HD	\$9.45
Factory OEM Clutch Plates		
43699550	22201-822-306 Disk, Clutch Friction	\$28.96
03970340	22311-822-610 Plate, Clutch 1.6mm	\$16.55
03970420	22350-822-610 Plate Comp., Clutch Pressure	\$22.47

NO OUCH!
BUY FPX AND SAVE \$\$\$

OUCH!

K&N AIR FILTERS

Fits Honda®

GX140, GX160, GX200, GX240, GX270

K&N vs STOCK			
5 Year Cost Comparison			
NO. KARTS	K&N	STOCK	SAVINGS
10	\$630	\$1575	\$945
20	\$1260	\$3150	\$1890
30	\$1890	\$4725	\$2835
40	\$2520	\$6300	\$3780



- 1. UNRESTRICTED AIR FLOW.** Dust and dirt remain on outside surface of filter allowing air to pass freely through cotton fabric.
- 2. UNAFFECTED BY MOISTURE.** Moisture will not clog oil-saturated element.
- 3. ECONOMICAL.** J&J K&N® air filters are designed for permanent installation with normal use. When extremely heavy dirt deposits have built up, J&J K&N® filters can be cleaned and reused again and again. Over the lifetime of the go-kart, this filter will pay for itself numerous times by eliminating replacement cost.
- 4. QUALITY ENGINEERED.** J&J K&N® filters are manufactured under rigid quality control from the highest degree of durable materials.
- 5. WARRANTY.** J&J K&N® filters are warranted against defective materials or workmanship for one year unlimited mileage. Under most conditions J&J K&N® air filters never need to be replaced. With proper cleaning and care, filters will last the life of your engine.

FPX #	Description	Price
FPX K&N Filters		
SP-2747	Filter, Air GX160, 200 K&N	\$39.98
SP-2748	Filter, Air GX240, 270 K&N	\$39.98
K&N Filter Re-charger Kits		
99-0621C	Filter, K&N Cleaner 32oz Squirt Bottle	\$14.65
99-0516C	Filter, K&N Filtercharger Oil 12oz Aerosol	\$10.44
99-5000C	Filter, K&N Oil/Cleaner Kit	\$15.73

OIL EXTRACTION & DISPENSING

Save time & money!

Go-Karts biggest expense: TIRES, ENGINES & CLUTCHES.

Number one reason engines and clutches fail.

The lack of consistent oil changes.

Oil should be changed every 50 to 100 hours (Commercial/Go-Kart) use. In some FEC's that's twice a week.

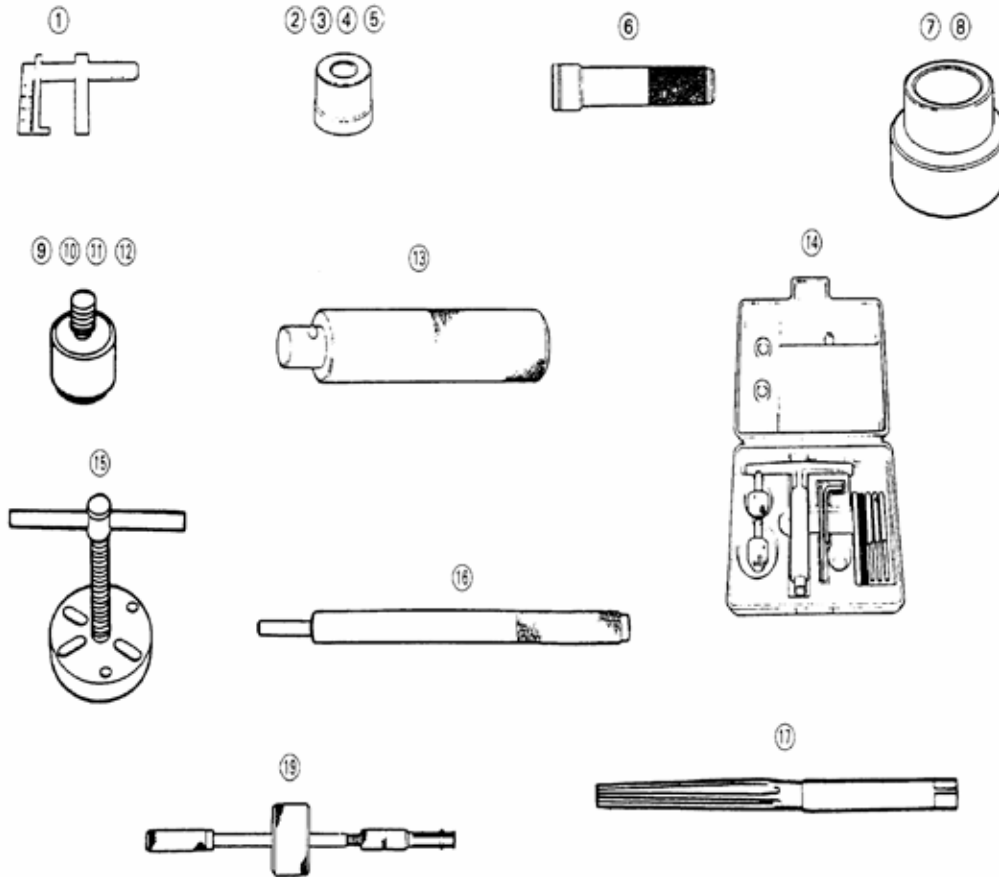
Do a complete oil change in less than a minute. No need to remove kart body or dipsticks. Change oil in 30 karts in 1 hour. Ask your mechanic how long it takes now. Works on any kart.



The air operated oil dispenser makes oil changes fast and clean. This dispenser comes with a 6.3 gallon tank and digital quart calibration valve meter with flex spout. Dispense 1/100 or 0.01 of a quart of oil. Flow can be set at 1-26 quarts per minute with a typical accuracy of +/- 1.0% and repeatability of +/- 0.3%. Batteries are replaceable and retain calibration information in case of power loss.

FPX #	Description	Price
FPX K&N Filters		
011060	Oil Extractor, 6.3 Gal (W/Probes) Air	\$637.50
1-60-0130	Oil Extractor, FPX 20L (5.2 gal) 6mm & 8mm Probes Gear Pump	\$555.39
011050	Oil Dispenser, 6.3 Gal (W/Meter) Air	\$576.30
1-60-A0082-R	Oil Drain Kit, Engine & Clutch (160, 200)	\$43.13
1-60-A0083-R	Oil Drain Kit, Engine & Clutch (240, 270)	\$43.13
Call	Oil Drain Kit, Extractor/ Dispenser adaptors	\$ call

SPECIAL TOOLS



Ref #	FPX #	Honda #	Description	Price
01	02389231	07401-0010000	07401-0010000 Float Level Gauge	\$43.21
02	07535091	07746-0010100	07746-0010100 Attachment, 32x35mm	\$8.52
**	09598250	07746-0010500	07746-0010500 Attachment, 62x68mm	\$28.28
04	15011210	07746-0010600	07746-0010600 Driver OU 72X75mm	\$33.21
05	07534590	07746-0030100	07746-0030100 Driver, Handle 40mm	\$68.20
06	08131130	07746-0030300	07746-0030300 Attachment, 30mm I.D.	\$31.09
07	12528080	07746-0030400	07746-0030400 Attachment, 35mm ID	\$25.27
08	09598821	07746-0040300	07746-0040300 Pilot, 15mm	\$5.04
09	12528161	07746-0040500	07746-0040500 Pilot, 20mm	\$9.29
10	10212520	07746-0040700	07746-0040700 Pilot, 30mm	\$14.85
11	13829440	07746-0040800	07746-0040800 Pilot, 35mm	\$17.78
12	09332421	07749-0010000	07749-0010000 Driver	\$33.69
13	28323190	07780-P01020A	07780-P01020A Valve Seat Cutter #114 60	\$172.38
14	28323010	07782-P01010B	07782-P01010B Valve Seat Cutter #128 30-45	\$244.80
**	23327240	07781-P02010A	07781-P02010A Solid Pilot Bar, 6.60mm	\$40.80
**	23823310	07781-P02020A	07781-P02020A Solid Pilot Bar 6.62mm	\$40.80
**	23823490	07781-P02030A	07781-P02030A Solid Pilot Bar 6.65mm	\$41.82
**	28324751	07781-P01010A	07782-P01010A T-Wrench #505	\$23.46
**	28324831	07782-P01020A	07782-P01020A T-Wrench Adapter #503-1	\$19.38
**	28324911	07783-P01030A	07782-P01030A Accessory Package #246	\$13.26
**	07249060	07942-6570100	07942-6570100 Driver, Valve Guide	\$13.60
16	42189541	07984-ZE20000	07984-ZE2000D Valve Guide Reamer 6.6mm	\$135.66
17	17244751	07936-KC10500	07936-KC10500 Remover Bearing 15mm	\$121.83



FAX ANYTIME - DAY or NIGHT
Toll FREE (USA) 1-800-366-7505
International 1-503-304-1899

Photocopy this form.
 If you wish to confirm receipt call or e-mail:
 Phone: 1-503-304-8899 or 1-800-854-3140
 Parts@FunPartsXpress.com

http://www.funpartsexpress.com
http://www.jjamusements.com

Date: _____ Time: _____ Customer #: _____ (Required for all orders)

E-Mail: _____ @ _____

Bill to: _____ Ship to: _____

Phone Number: () - EXT. FAX: () -

PO# or Contact Name: _____

VISA ___ M/C ___ AMEX ___

Card Number: [] Expires: _____

Print name exactly as it appears on the credit card. _____

Signature _____

SHIP VIA UPS (Please X One)	UPS Ground (3-7 Days)	UPS Red (1 Day)
	UPS Orange (3 Days)	UPS Red Saturday (Selected areas only)
	UPS Blue (2 Days)	INTERNATIONAL

	PART #	QTY	DESCRIPTION	PRICE
1				
2				
3				
4				
5				
6				
7				
8				
9				
10				
11				

Special Instructions: _____



Amusements, Inc.

FAX ANYTIME - DAY or NIGHT

Toll FREE (USA) 1-800-366-7505

International 1-503-304-1899

Photocopy this form.

If you wish to confirm receipt call or e-mail:

Phone: 1-503-304-8899 or 1-800-854-3140

Parts@FunPartsXpress.com

<http://www.funpartsexpress.com>

<http://www.jjamusements.com>

Page 2

Company Name: _____ Customer Number: _____

	PART #	QTY	DESCRIPTION	PRICE
12				
13				
14				
15				
16				
17				
18				
19				
20				
21				
22				
23				
24				
25				
26				
27				
28				
29				

DOUBLE CHECK ALL PART NUMBERS AND DESCRIPTIONS BEFORE PLACING ORDER.

All prices are subject to change without prior notice

Parts Guides are available on the Web. Get the latest news & updates:

<http://www.funpartsexpress> OR <http://www.jjamusements.com>

Thank You For Your Order! Your Business is Appreciated.