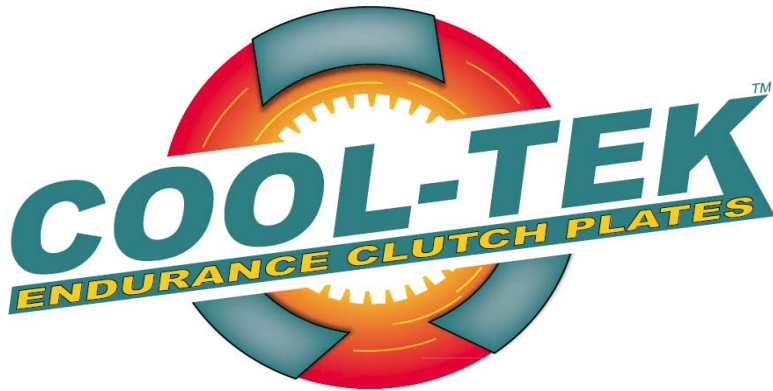




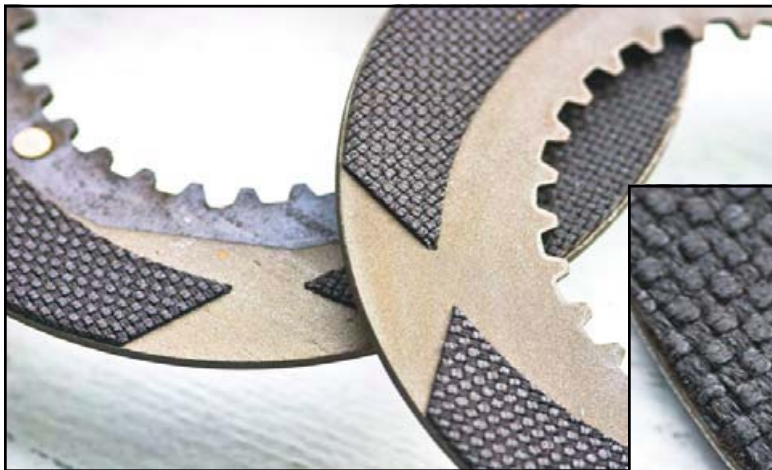
A Division of J&J Amusements, Inc.



800-854-3140

FunPartsXpress.com

- LAST LONGER THAN OEM
- COST LESS THAN DEALER OR DISTRIBUTOR
- KEEP OIL CLEANER
- RUN COOLER
- EXTEND OIL CHANGES



Segmented design

Close up view



E-mail or Call me anytime.

dan@jjamusements.com / 800-854-3140

You will be amazed at how much money you save.



FUN PARTS XPRESS

PRECISION QUALITY PARTS

A Division of J&J Amusements, Inc.

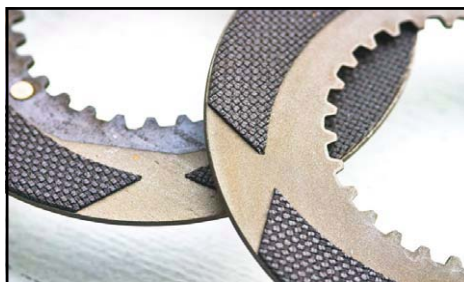
FPX EXCLUSIVE

Cool-Tek

Endurance Clutch



Close up view



Segmented design

- LAST LONGER THAN OEM
- CLEANER OIL
- COOLER RUNNING
- EXTENDED OIL CHANGES
- COST LESS THAN OEM

Part #	Description	Price
1-00-K0002CT	Clutch Kit, GX/G160-200 Cool-Tek Complete	87.92
1-00-K0001CT	Clutch Kit, GX/G240-270 Cool-Tek Complete	92.45
06360840HD	Washer, Thrust 20mm (GX160 & GX200)	6.99
07612210HD	Washer, Thrust 25mm (GX240 & GX270)	7.58
06359380HD	Center, Clutch (GX160 & GX200)	30.59
07607360HD	Center, Clutch (GX240 & GX270)	30.59
06359610HD	Sprocket Comp., Drive (GX160 & GX200)	50.99
07607510HD	Sprocket Comp. Drive (14T) (GX240 & GX270)	56.00
03971250HD	Shaft Comp., P.T.O. (28T)	70.35
43699550CF	Plate, Clutch Friction Disc Cool Tek	18.31
03970340HD	Plate, Clutch Metal HD (Smooth Type STD)	8.10
03970420CF	Plate, Clutch Pressure Disc Cool Tek	18.31
03970670T	Holder, Clutch Spring (Spring Holder Clips)	1.41
03970590HD	Spring, Clutch Free "FPX"	1.15
10006	Seal, GX Output Sft High Heat Viton (Replmt for 00651360)	9.00
10007	Seal, GX Reduc.Input Sft High Heat Viton 5-6.5HP	9.99
10008	Seal, GX Reduc.Input Sft High Heat Viton 8-9HP	8.75

NOTE: WHEN INSTALLING COOL-TEK PLATES YOU MUST USE NEW SPRNG HOLDER CLIPS. THEY SHOULD LOOK LIKE THIS AFTER INSTALLATION.



INCORRECT





FUN PARTS XPRESS

PRECISION QUALITY PARTS

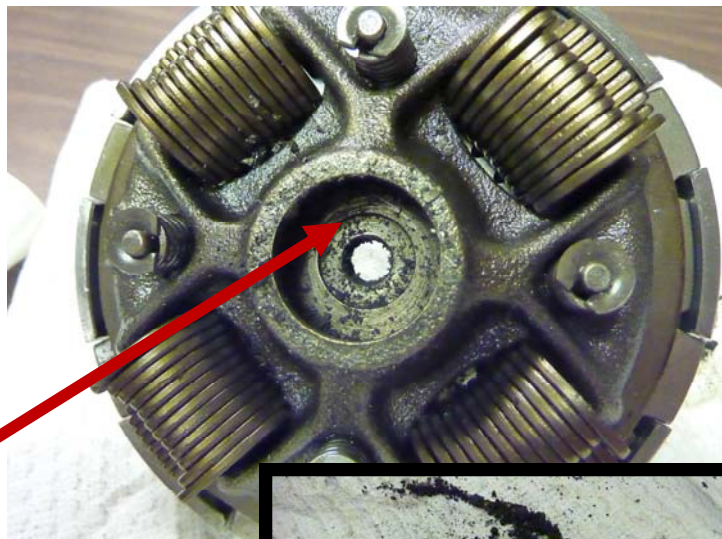
A Division of J&J Amusements, Inc.

FPX Tech-Tip for longer life out of your new Cool-Tek clutches.

When installing your new Cool-Tek Endurance Clutch Plates, make sure all oiling orifices are completely cleaned.

Here is an example of the oiling orifice in a weight holder that is clogged with debris.

WARNING: Severe plate, center and sprocket wear will occur if orifices not cleaned. See example below of what it should look like after cleaning.



NOTE: WHEN INSTALLING COOL-TEK PLATES YOU MUST USE NEW OEM SPRING HOLDER CLIPS. THEY SHOULD LOOK LIKE THIS AFTER INSTALLATION.



Hot tip from Cool-Tek

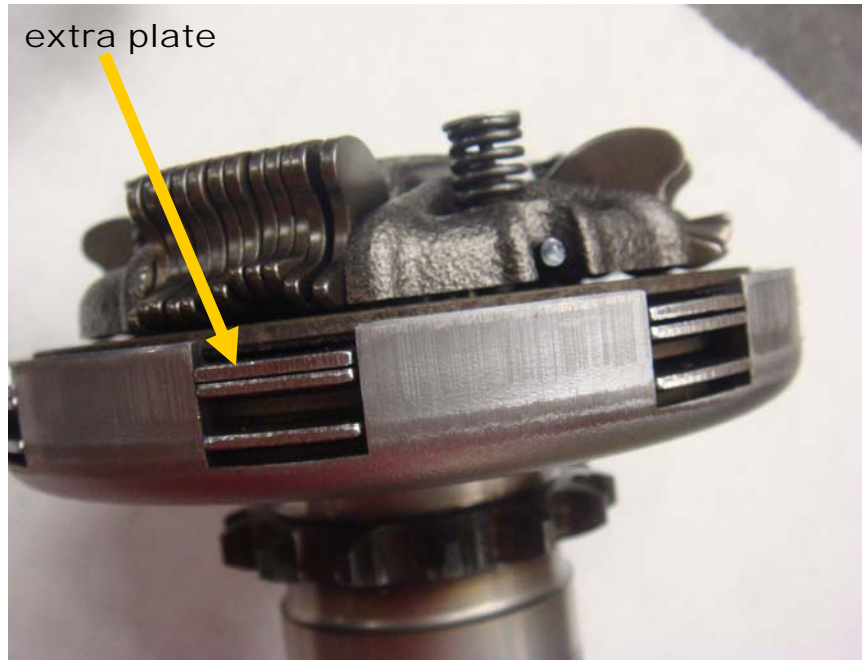
Extensive field testing and prolonged use has revealed an easy hot tip to extend clutch plate life.



funpartsxpress.com

800-854-3140

This tip comes from mechanics in the field that use one extra steel plate to extend clutch wear. This field trick has been around for many years and works on standard OEM and FPX-equipped clutch packs.



On new and slightly used clutches, the pressure plate needs to travel a long distance to engage and lock the clutch. When you add an extra steel plate, you effectively shorten the distance the pressure plate travels. This will reduce slipping and overheating, and allow complete wear of all fiber plates.

The Cool-Tek clutch plate system keeps oil much cleaner for longer periods. This makes the use of multiviscosity synthetic oils a viable option, and can be a big help on cold starts where the clutch normally drags.

HOT TIP



Part #	Description	Price
1-00-K0002CT	Clutch Kit, GX/G160-200 Cool-Tek Complete	87.95
1-00-K0001CT	Clutch Kit, GX/G240-270 Cool-Tek Complete	92.45

FPX clutch kits for GX160, 200, 240 and 270 engines now include three steel plates.